



MET Antibody

E11-10305C

Catalog Number: E11-10305C

Concentration: 1mg/ml

Swiss-Prot No.: P08581

Other Names: EC 2.7.10.1, HGF receptor, HGF-SF receptor, Hepatocyte growth factor receptor precursor, Met proto- oncogene tyrosine kinase, c-met, kinase Met

Storage/Stability: Store at -20°C/1 year

Form of Antibody: Rabbit IgG in phosphate buffered saline (without Mg^{2+} and Ca^{2+}), pH 7.4, 150mM NaCl, 0.02% sodium azide and 50% glycerol.

Immunogen: The antiserum was produced against synthesized peptide derived from internal of human MET.

Purification: The antibody was affinity-purified from rabbit antiserum by affinity-chromatography using epitope-specific immunogen.

Specificity: MET antibody detects endogenous levels of total MET protein.

Reactivity: Human (Identities = 100%, Positives = 100%)

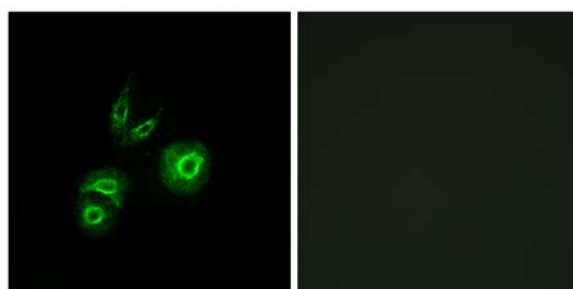
Applications: IF: 1:100~1:500 ELISA: 1:1000

References:

Park M., Proc. Natl. Acad. Sci. U.S.A. 84:6379-6383(1987).

Hillier L.W., Nature 424:157-164(2003).

Chan A.M.-L., Oncogene 1:229-233(1987).



Peptide

-

+

Immunofluorescence analysis of A549 cells, using MET antibody.

For Research Use Only