



NR2F6 Antibody

E11-10336C

Catalog Number: E11-10336C

Concentration: 1mg/ml

Swiss-Prot No.: P10588

Other Names: EAR2, ERBAL2, NR2F6, Orphan nuclear receptor EAR-2, V-erbA related protein EAR-2

Storage/Stability: Store at -20°C/1 year

Form of Antibody: Rabbit IgG in phosphate buffered saline (without Mg^{2+} and Ca^{2+}), pH 7.4, 150mM NaCl, 0.02% sodium azide and 50% glycerol.

Immunogen: The antiserum was produced against synthesized peptide derived from N-terminal of human NR2F6.

Purification: The antibody was affinity-purified from

rabbit antiserum by affinity-chromatography using epitope-specific immunogen.

Specificity: NR2F6 antibody detects endogenous levels of total NR2F6 protein.

Reactivity: Human, Mouse, Rat

Applications: WB: 1:500~1:1000 IHC: 1:50~1:100

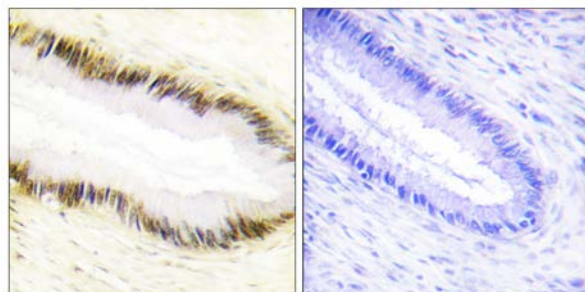
IF: 1:100~1:500 ELISA: 1:20000

References:

Miyajima N., Nucleic Acids Res. 16:11057-11074(1988).

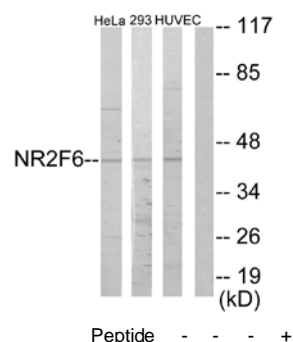
The MGC Project Team, Genome Res. 14:2121-2127(2004).

Beausoleil S.A., Proc. Natl. Acad. Sci. U.S.A. 101:12130-12135(2004).

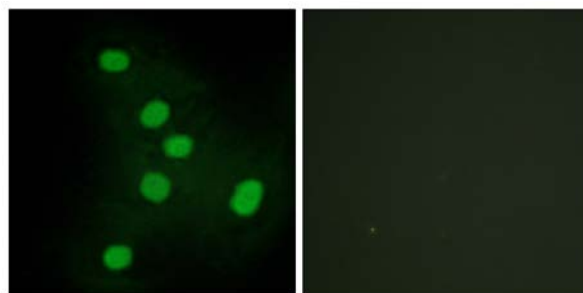


Peptide - +

Immunohistochemistry analysis of paraffin-embedded human cervix carcinoma tissue using NR2F6 antibody.



Western blot analysis of extracts from HeLa cells, 293 cells and HUVEC cells, using NR2F6 antibody.



Peptide - +

For Research Use Only

Immunofluorescence analysis of HepG2 cells, using
NR2F6 antibody.