



## K6PL Antibody

**E11-10412C****Catalog Number:** E11-10412C**Concentration:** 1mg/ml**Swiss-Prot No.:** P17858**Other Names:** 6-phosphofructokinase, liver type, EC 2.7.1.11, K6PL, PFK-B, PFKL, phosphofructo-1-kinase isozyme B, phosphofructokinase 1, phosphohexokinase**Storage/Stability:** Store at -20°C/1 year**Form of Antibody:** Rabbit IgG in phosphate buffered saline (without Mg<sup>2+</sup> and Ca<sup>2+</sup>), pH 7.4, 150mM NaCl, 0.02% sodium azide and 50% glycerol.**Immunogen:** The antiserum was produced against synthesized peptide derived from C-terminal of human

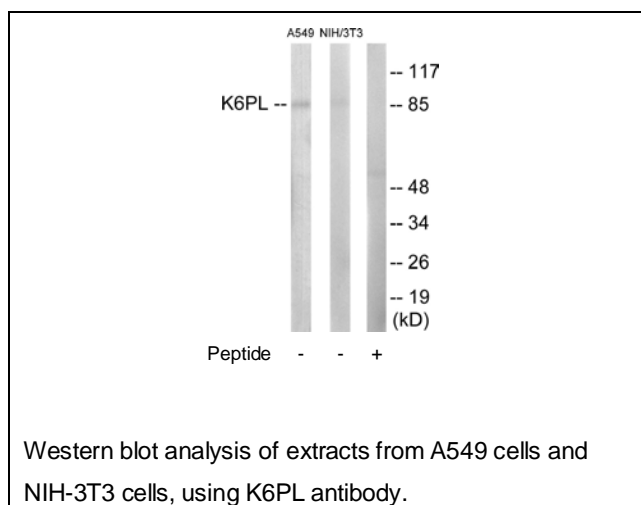
K6PL.

**Purification:** The antibody was affinity-purified from rabbit antiserum by affinity-chromatography using epitope-specific immunogen.**Specificity:** K6PL antibody detects endogenous levels of total K6PL protein.**Reactivity:** Human, Mouse, Rat**Applications:** WB: 1:500~1:1000      ELISA: 1:20000**References:**

Levanon D., DNA 8:733-743(1989).

Elson A., Genomics 7:47-56(1990).

Hattori M., Nature 405:311-319(2000).

**For Research Use Only**