



EGR1/2 Antibody

E11-10416C

Catalog Number: E11-10416C

Concentration: 1mg/ml

Swiss-Prot No.: P18146/P11161

Other Names: AT225, EGR-1, Early growth response protein 1, KROX-24, Krox-24 protein, NGFI-A, Nerve growth factor-induced protein A, Transcription factor ETR103, ZIF268, ZNF225, Zinc finger protein 225

Storage/Stability: Store at -20°C/1 year

Form of Antibody: Rabbit IgG in phosphate buffered saline (without Mg²⁺ and Ca²⁺), pH 7.4, 150mM NaCl, 0.02% sodium azide and 50% glycerol.

Immunogen: The antiserum was produced against synthesized peptide derived from internal of human

EGR1/2.

Purification: The antibody was affinity-purified from rabbit antiserum by affinity-chromatography using epitope-specific immunogen.

Specificity: EGR1/2 antibody detects endogenous levels of total EGR1/2 protein.

Reactivity: Human, Mouse, Rat

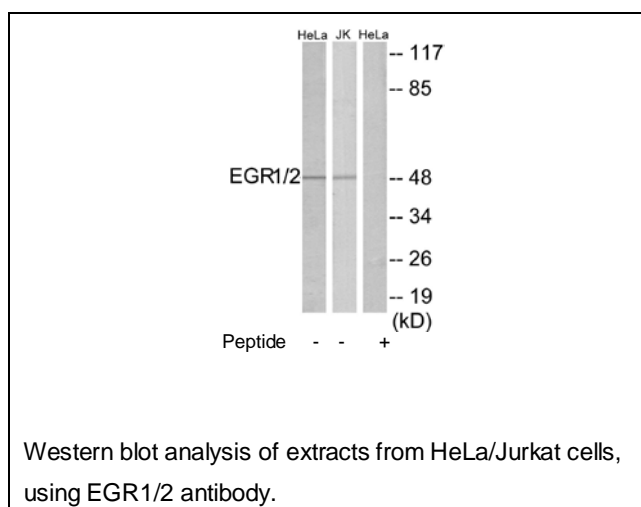
Applications: WB: 1:500~1:1000 ELISA: 1:20000

References:

Suggs S.V., Nucleic Acids Res. 18:4283-4283(1990).

Shimizu N., J. Biochem. 111:272-277(1992).

Wright J.J., Science 248:588-591(1990).



For Research Use Only