



## TFE3 Antibody

E11-10430C

**Catalog Number:** E11-10430C**Concentration:** 1mg/ml**Swiss-Prot No.:** P19532**Other Names:** Transcription factor E3, TFE3**Storage/Stability:** Store at -20°C/1 year**Form of Antibody:** Rabbit IgG in phosphate buffered saline (without  $Mg^{2+}$  and  $Ca^{2+}$ ), pH 7.4, 150mM NaCl, 0.02% sodium azide and 50% glycerol.**Immunogen:** The antiserum was produced against synthesized peptide derived from internal of human TFE3.**Purification:** The antibody was affinity-purified from

rabbit antiserum by affinity-chromatography using epitope-specific immunogen.

**Specificity:** TFE3 antibody detects endogenous levels of total TFE3 protein.**Reactivity:** Human, Mouse**Applications:** WB: 1:500~1:1000 IHC: 1:50~1:100

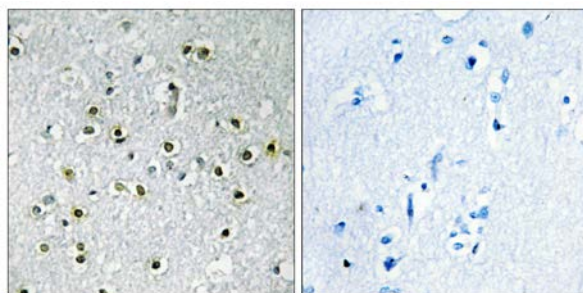
ELISA: 1:20000

**References:**

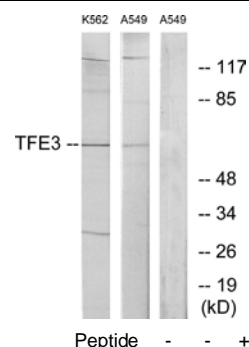
Clark J., Oncogene 15:2233-2239(1997).

Sidhar S.K., Hum. Mol. Genet. 5:1333-1338(1996).

Beckmann H., Genes Dev. 4:167-179(1990).



Immunohistochemistry analysis of paraffin-embedded human brain tissue using TFE3 antibody.



Western blot analysis of extracts from K562 cells and A549 cells, using TFE3 antibody.

**For Research Use Only**