



## EFNA1 Antibody

**E11-10440C****Catalog Number:** E11-10440C**Concentration:** 1mg/ml**Swiss-Prot No.:** P20827**Other Names:** Ephrin-A1 [Precursor], EPH-related receptor tyrosine kinase ligand 1, LERK-1, Immediate early response protein B61, Tumor necrosis factor, alpha-induced protein 4, EFNA1, EPLG1, LERK1, TNFAIP4**Storage/Stability:** Store at -20°C/1 year**Form of Antibody:** Rabbit IgG in phosphate buffered saline (without Mg<sup>2+</sup> and Ca<sup>2+</sup>), pH 7.4, 150mM NaCl, 0.02% sodium azide and 50% glycerol.**Immunogen:** The antiserum was produced against synthesized peptide derived from internal of human

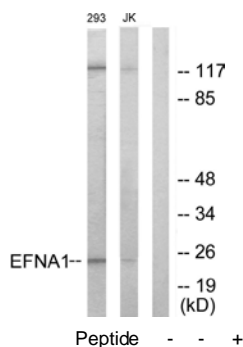
EFNA1.

**Purification:** The antibody was affinity-purified from rabbit antiserum by affinity-chromatography using epitope-specific immunogen.**Specificity:** EFNA1 antibody detects endogenous levels of total EFNA1 protein.**Reactivity:** Human, Mouse, Rat**Applications:** WB: 1:500~1:1000 IF: 1:100~1:500  
ELISA: 1:10000**References:**

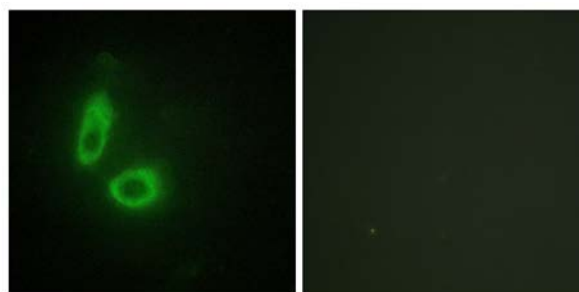
Holzman L.B., Mol. Cell. Biol. 10:5830-5838(1990).

Gregory S.G., Nature 441:315-321(2006).

Zhang Z., Protein Sci. 13:2819-2824(2004).



Western blot analysis of extracts from 293 cells and Jurkat cells, using EFNA1 antibody.



Immunofluorescence analysis of HeLa cells, using EFNA1 antibody.