



CD2L1 Antibody

E11-10442C

Catalog Number: E11-10442C

Concentration: 1mg/ml

Swiss-Prot No.: P21127

Other Names: CD2L1, CDC2L1, CDK11, CLK-1, Cell division cycle 2-like 1, EC 2.7.11.22, Galactosyltransferase associated protein kinase p58/GTA, PITSLREA, PK58, p58 CLK-1

Storage/Stability: Store at -20°C/1 year

Form of Antibody: Rabbit IgG in phosphate buffered saline (without Mg^{2+} and Ca^{2+}), pH 7.4, 150mM NaCl, 0.02% sodium azide and 50% glycerol.

Immunogen: The antiserum was produced against synthesized peptide derived from N-terminal of human

CD2L1.

Purification: The antibody was affinity-purified from rabbit antiserum by affinity-chromatography using epitope-specific immunogen.

Specificity: CD2L1 antibody detects endogenous levels of total CD2L1 protein.

Reactivity: Human, Mouse

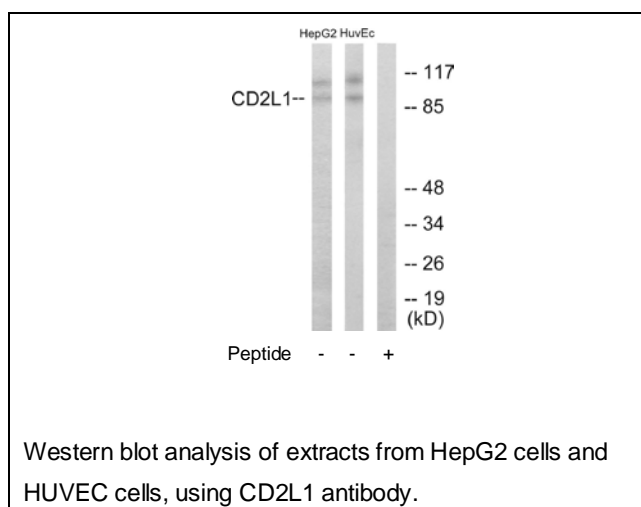
Applications: WB: 1:500~1:1000 ELISA: 1:20000

References:

Bunnell B.A., Proc. Natl. Acad. Sci. U.S.A. 87:7467-7471(1990).

Eipers P.G., Genomics 13:613-621(1992).

Xiang J., J. Biol. Chem. 269:15786-15794(1994).



For Research Use Only