



## EPHA1 Antibody

E11-10446C

**Catalog Number:** E11-10446C

**Concentration:** 1mg/ml

**Swiss-Prot No.:** P21709

**Other Names:** EC 2.7.10.1, EPA1, EPH, EPHT, EPHT1, Tyrosine-protein kinase receptor EPH

**Storage/Stability:** Store at -20°C/1 year

**Form of Antibody:** Rabbit IgG in phosphate buffered saline (without Mg<sup>2+</sup> and Ca<sup>2+</sup>), pH 7.4, 150mM NaCl, 0.02% sodium azide and 50% glycerol.

**Immunogen:** The antiserum was produced against synthesized peptide derived from internal of human EPHA1.

**Purification:** The antibody was affinity-purified from rabbit antiserum by affinity-chromatography using epitope-specific immunogen.

**Specificity:** EPHA1 antibody detects endogenous levels of total EPHA1 protein.

**Reactivity:** Human

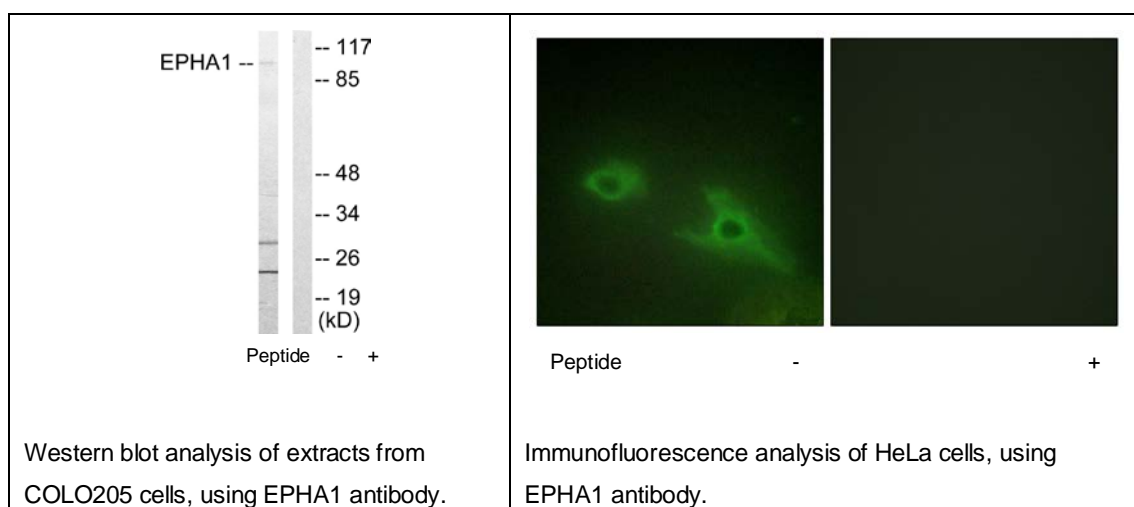
**Applications:** WB: 1:500~1:1000 IF: 1:100~1:500  
ELISA: 1:10000

**References:**

Hirai H., Science 238:1717-1720(1987).

Owshalimpur D., Mol. Cell. Probes 13:169-173(1999).

Hillier L.W., Nature 424:157-164(2003).



**For Research Use Only**