



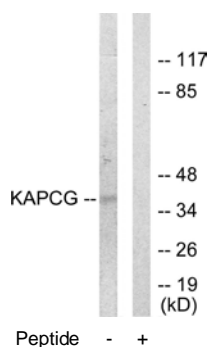
KAPCG Antibody

E11-10451C**Catalog Number:** E11-10451C**Concentration:** 1mg/ml**Swiss-Prot No.:** P22612**Other Names:** cAMP-dependent protein kinase, gamma-catalytic subunit, EC 2.7.11.11, PKA C-gamma, PRKACG**Storage/Stability:** Store at -20°C/1 year**Form of Antibody:** Rabbit IgG in phosphate buffered saline (without Mg^{2+} and Ca^{2+}), pH 7.4, 150mM NaCl, 0.02% sodium azide and 50% glycerol.**Immunogen:** The antiserum was produced against synthesized peptide derived from N-terminal of human KAPCG.**Purification:** The antibody was affinity-purified from rabbit antiserum by affinity-chromatography using epitope-specific immunogen.**Specificity:** KAPCG antibody detects endogenous levels of total KAPCG protein.**Reactivity:** Human**Applications:** WB: 1:500~1:1000 ELISA: 1:10000**References:**

Beebe S.J., Mol. Endocrinol. 4:465-475(1990).

Reinton N., Genomics 49:290-297(1998).

The MGC Project Team, Genome Res. 14:2121-2127(2004).



Western blot analysis of extracts from COLO205 cells, using KAPCG antibody.

For Research Use Only