



## JAK1 Antibody

E11-10459C

**Catalog Number:** E11-10459C

**Concentration:** 1mg/ml

**Swiss-Prot No.:** P23458

**Other Names:** EC 2.7.10.2, JAK-1, JAK1, JAK1A, Janus kinase 1, kinase Jak1

**Storage/Stability:** Store at -20°C/1 year

**Form of Antibody:** Rabbit IgG in phosphate buffered saline (without  $Mg^{2+}$  and  $Ca^{2+}$ ), pH 7.4, 150mM NaCl, 0.02% sodium azide and 50% glycerol.

**Immunogen:** The antiserum was produced against synthesized peptide derived from internal of human JAK1.

**Purification:** The antibody was affinity-purified from rabbit antiserum by affinity-chromatography using

epitope-specific immunogen.

**Specificity:** JAK1 antibody detects endogenous levels of total JAK1 protein.

**Reactivity:** Human (Identities = 100%, Positives = 100%);  
Mouse (Identities = 100%, Positives = 100%);  
Rat (Identities = 100%, Positives = 100%)

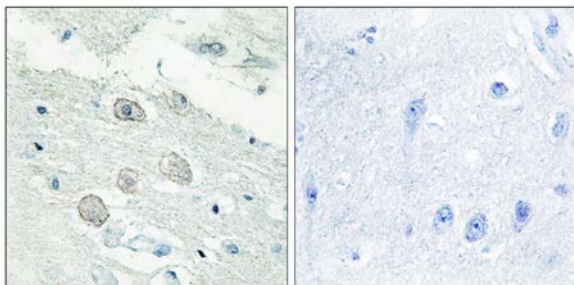
**Applications:** IHC: 1:50~1:100 IF: 1:100~1:500  
ELISA: 1:10000

**References:**

Wilks A.F., Mol. Cell. Biol. 11:2057-2065(1991).

Lee S.-T., Oncogene 8:3403-3410(1993).

Lindholm C.K., Biochem. Biophys. Res. Commun. 296:929-936(2002).

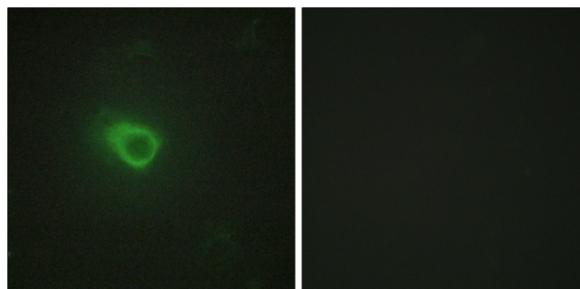


Peptide

-

+

Immunohistochemistry analysis of paraffin-embedded human brain tissue, using JAK1 antibody.



Peptide

-

+

Immunofluorescence analysis of HeLa cells, using JAK1 antibody.

**For Research Use Only**