



## MARK3 Antibody

E11-10490C

**Catalog Number:** E11-10490C

**Concentration:** 1mg/ml

**Swiss-Prot No.:** P27448

**Other Names:** C-TAK1, Cdc25C- associated protein kinase 1, EC 2.7.11.1, MAP/microtubule affinity-regulating kinase 3, Protein kinase STK10, Ser/Thr protein kinase PAR-1, Serine/threonine protein kinase p78, cTAK1

**Storage/Stability:** Store at -20°C/1 year

**Form of Antibody:** Rabbit IgG in phosphate buffered saline (without Mg<sup>2+</sup> and Ca<sup>2+</sup>), pH 7.4, 150mM NaCl, 0.02% sodium azide and 50% glycerol.

**Immunogen:** The antiserum was produced against synthesized peptide derived from N-terminal of human

MARK3.

**Purification:** The antibody was affinity-purified from rabbit antiserum by affinity-chromatography using epitope-specific immunogen.

**Specificity:** MARK3 antibody detects endogenous levels of total MARK3 protein.

**Reactivity:** Human, Mouse, Rat

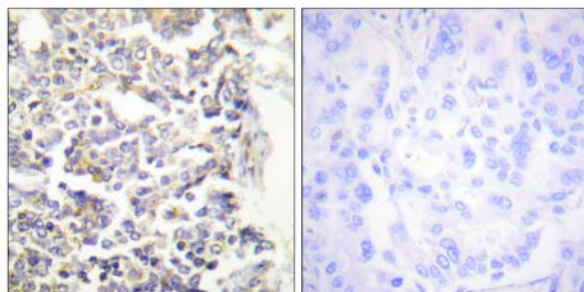
**Applications:** WB: 1:500~1:1000 IHC: 1:50~1:100  
ELISA: 1:5000

**References:**

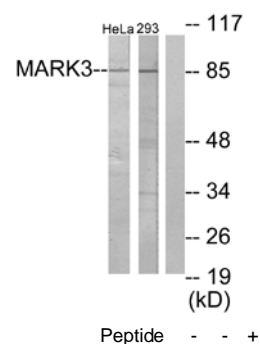
Peng C.Y., Cell Growth Differ. 9:197-208(1998).

Sun T.-Q., Nat. Cell Biol. 3:628-636(2001).

Wissing J., Mol. Cell. Proteomics 6:537-547(2007).



Immunohistochemistry analysis of paraffin-embedded human lung carcinoma tissue using MARK3 antibody.



Western blot analysis of extracts from HeLa cells and 293 cells, using MARK3 antibody.