



EPHA3 Antibody

E11-10508C

Catalog Number: E11-10508C

Concentration: 1mg/ml

Swiss-Prot No.: P29320

Other Names: EPA3; ETK; ETK1; Ephrin type-A receptor 3 precursor; HEK; HEK4; MEK4; REK4; TYRO-4; TYRO4; Tyrosine-protein kinase receptor ETK1; Tyrosine-protein kinase receptor REK4; kinase EphA3

Storage/Stability: Store at -20°C/1 year

Form of Antibody: Rabbit IgG in phosphate buffered saline (without Mg²⁺ and Ca²⁺), pH 7.4, 150mM NaCl, 0.02% sodium azide and 50% glycerol.

Immunogen: The antiserum was produced against synthesized peptide derived from internal of human EPHA3.

Purification: The antibody was affinity-purified from rabbit antiserum by affinity-chromatography using

epitope-specific immunogen.

Specificity: EPHA3 antibody detects endogenous levels of total EPHA3 protein.

Reactivity: Human (Identities = 100%, Positives = 100%)
Mouse (Identities = 100%, Positives = 100%)
Rat (Identities = 100%, Positives = 100%)

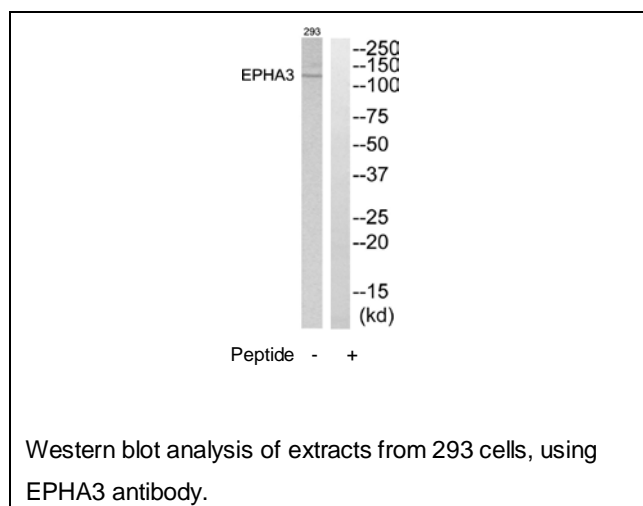
Applications: WB: 1:500~1:1000 IHC: 1:50~1:100
ELISA: 1:40000

References:

Coulie P.G., Cancer Res. 60:4855-4863(2000).

Comb M.J., Cell 131:1190-1203(2007)

Brenner S.E., Genome Biol. 5:R8.1-R8.16(2004).



For Research Use Only