



EPHB2 Antibody

E11-10510C**Catalog Number:** E11-10510C**Concentration:** 1mg/ml**Swiss-Prot No.:** P29323**Other Names:** CEK5, DRT, EC 2.7.10.1, EPH-3, EPHB2, EPTH3, ERK, Ephrin type-B receptor 2 precursor, HEK5, NUK, Receptor protein-tyrosine kinase HEK5, SEK-3, SEK3, kinase EphB2**Storage/Stability:** Store at -20°C/1 year**Form of Antibody:** Rabbit IgG in phosphate buffered saline (without Mg^{2+} and Ca^{2+}), pH 7.4, 150mM NaCl, 0.02% sodium azide and 50% glycerol.**Immunogen:** The antiserum was produced against synthesized peptide derived from C-terminal of human

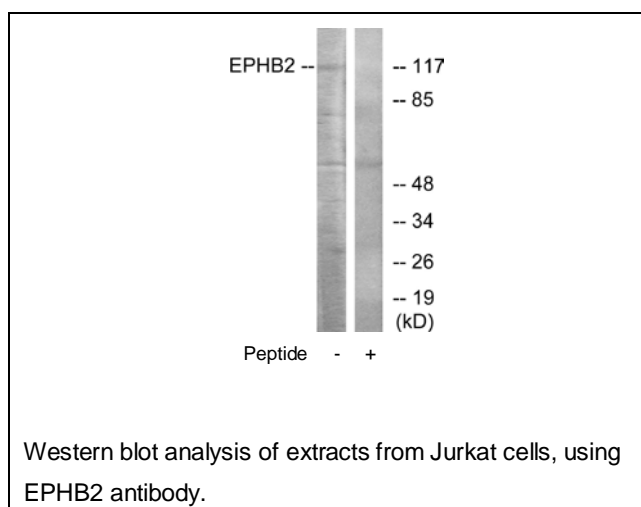
EPHB2.

Purification: The antibody was affinity-purified from rabbit antiserum by affinity-chromatography using epitope-specific immunogen.**Specificity:** EPHB2 antibody detects endogenous levels of total EPHB2 protein.**Reactivity:** Human**Applications:** WB: 1:500~1:1000 ELISA: 1:10000**References:**

Kiyokawa E., Cancer Res. 54:3645-3650(1994).

Ikegaki N., Hum. Mol. Genet. 4:2033-2045(1995).

Tang X.X., Oncogene 17:521-526(1998).

**For Research Use Only**