



CORO1A Antibody

E11-10520C**Catalog Number:** E11-10520C**Concentration:** 1mg/ml**Swiss-Prot No.:** P31146**Other Names:** CLABP; Clipin-A; CLIPINA; COR1A; CORO1; CORO1A; coronin, actin binding protein, 1A; coronin, actin-binding protein, 1A; coronin, actin-binding, 1A; coronin-1; Coronin-1A; Coronin-like protein A; Coronin-like protein p57; FLJ41407; HCORO1; MGC117380; p57; TACO; Tryptophan aspartate-containing coat protein**Storage/Stability:** Store at -20°C/1 year**Form of Antibody:** Rabbit IgG in phosphate buffered saline (without Mg²⁺ and Ca²⁺), pH 7.4, 150mM NaCl, 0.02% sodium azide and 50% glycerol.**Immunogen:** The antiserum was produced against synthesized peptide derived from Internal of human

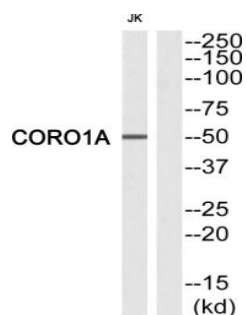
CORO1A.

Purification: The antibody was affinity-purified from rabbit antiserum by affinity-chromatography using epitope-specific immunogen.**Specificity:** CORO1A antibody detects endogenous levels of total CORO1A protein.**Reactivity:** Human (Identities = 100%, Positives = 100%); Mouse (Identities = 100%, Positives = 100%); Rat (Identities = 100%, Positives = 100%)**Applications:** WB: 1:500~1:1000 ELISA: 1:40000**References:**

Suzuki K., FEBS Lett. 364:283-288(1995).

Grogan A., Submitted (DEC-1995) to the EMBL/GenBank/DDBJ databases.

Liau G., Submitted (AUG-1995) to the EMBL/GenBank/DDBJ databases.



Western blot analysis of extracts from Jurkat cells, using CORO1A antibody.

For Research Use Only