



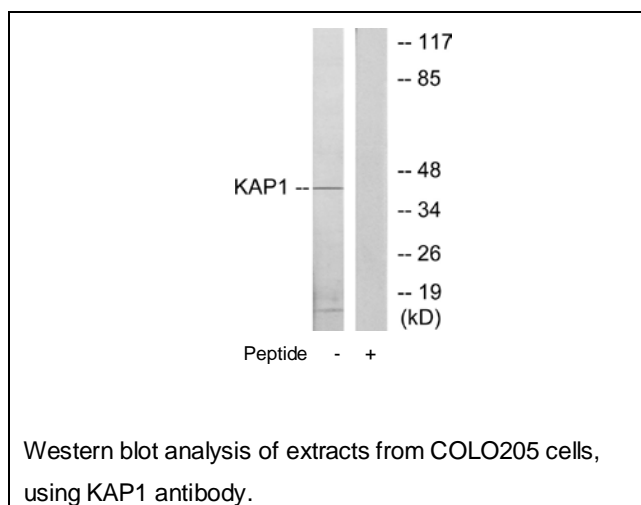
## KAP1 Antibody

**E11-10527C****Catalog Number:** E11-10527C**Concentration:** 1mg/ml**Swiss-Prot No.:** P31321**Other Names:** KAP1, PRKAR1B, cAMP-dependent protein kinase type I-beta regulatory subunit**Storage/Stability:** Store at -20°C/1 year**Form of Antibody:** Rabbit IgG in phosphate buffered saline (without  $Mg^{2+}$  and  $Ca^{2+}$ ), pH 7.4, 150mM NaCl, 0.02% sodium azide and 50% glycerol.**Immunogen:** The antiserum was produced against synthesized peptide derived from internal of human KAP1.**Purification:** The antibody was affinity-purified from rabbit antiserum by affinity-chromatography using epitope-specific immunogen.**Specificity:** KAP1 antibody detects endogenous levels of total KAP1 protein.**Reactivity:** Human, Mouse, Rat**Applications:** WB: 1:500~1:1000 ELISA: 1:20000**References:**

Solberg R., Biochem. Biophys. Res. Commun. 176:166-172(1991).

Solberg R., Exp. Cell Res. 214:595-605(1994).

Zhan X., Anal. Biochem. 354:279-289(2006).

**For Research Use Only**