



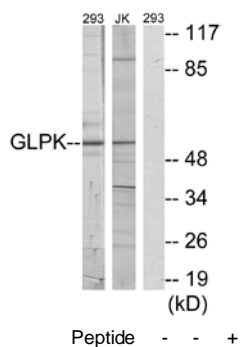
GLPK Antibody

E11-10533C**Catalog Number:** E11-10533C**Concentration:** 1mg/ml**Swiss-Prot No.:** P32189**Other Names:** Glycerol kinase, EC 2.7.1.30, ATP:glycerol 3-phosphotransferase, Glycerokinase, GKI**Storage/Stability:** Store at -20°C/1 year**Form of Antibody:** Rabbit IgG in phosphate buffered saline (without Mg^{2+} and Ca^{2+}), pH 7.4, 150mM NaCl, 0.02% sodium azide and 50% glycerol.**Immunogen:** The antiserum was produced against synthesized peptide derived from C-terminal of human GLPK.**Purification:** The antibody was affinity-purified from rabbit antiserum by affinity-chromatography using epitope-specific immunogen.**Specificity:** GLPK antibody detects endogenous levels of total GLPK protein.**Reactivity:** Human, Mouse, Rat**Applications:** WB: 1:500~1:1000 IF: 1:100~1:500
ELISA: 1:20000**References:**

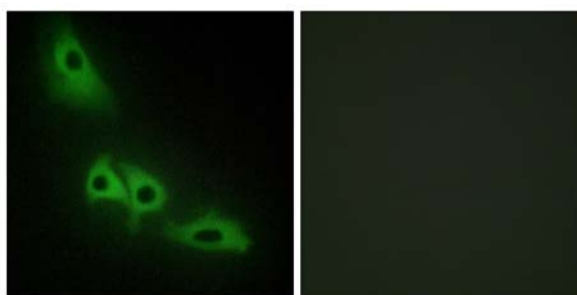
Guo W., Nat. Genet. 4:367-372(1993).

Sargent C.A., Hum. Mol. Genet. 3:1317-1324(1994).

Walker A.P., Hum. Mol. Genet. 2:107-114(1993).



Western blot analysis of extracts from 293 cells and Jurkat cells, using GLPK antibody.



Immunofluorescence analysis of HeLa cells, using GLPK antibody.

For Research Use Only