



LTBR Antibody

E11-10577C**Catalog Number:** E11-10577C**Concentration:** 1mg/ml**Swiss-Prot No.:** P36941**Other Names:** Tumor necrosis factor receptor superfamily member 3 [Precursor], Lymphotoxin-beta receptor, Tumor necrosis factor receptor 2-related protein, Tumor necrosis factor C receptor, LTBR, D12S370, TNFCR, TNFRSF3**Storage/Stability:** Store at -20°C/1 year**Form of Antibody:** Rabbit IgG in phosphate buffered saline (without Mg^{2+} and Ca^{2+}), pH 7.4, 150mM NaCl, 0.02% sodium azide and 50% glycerol.**Immunogen:** The antiserum was produced against

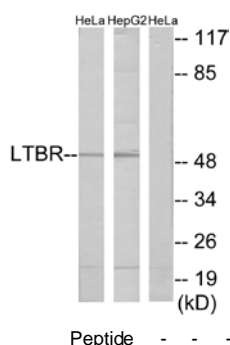
synthesized peptide derived from internal of human LTBR.

Purification: The antibody was affinity-purified from rabbit antiserum by affinity-chromatography using epitope-specific immunogen.**Specificity:** LTBR antibody detects endogenous levels of total LTBR protein.**Reactivity:** Human, Mouse**Applications:** WB: 1:500~1:1000 IF: 1:100~1:500
ELISA: 1:40000**References:**

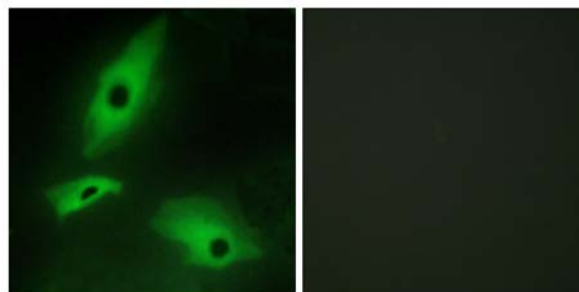
Baens M., Genomics 16:214-218(1993).

Crowe P.D., Science 264:707-710(1994).

Wu M.-Y., J. Biol. Chem. 274:11868-11873(1999).



Western blot analysis of extracts from HeLa cells and HepG2 cells, using LTBR antibody.



Immunofluorescence analysis of HeLa cells, using LTBR antibody.

For Research Use Only