



CUTL1 Antibody

E11-10586C

Catalog Number: E11-10586C

Concentration: 1mg/ml

Swiss-Prot No.: P39880

Other Names: CCAAT displacement protein, CDP, Cut-like 1

Storage/Stability: Store at -20°C/1 year

Form of Antibody: Rabbit IgG in phosphate buffered saline (without Mg^{2+} and Ca^{2+}), pH 7.4, 150mM NaCl, 0.02% sodium azide and 50% glycerol.

Immunogen: The antiserum was produced against synthesized peptide derived from N-terminal of human CUTL1.

Purification: The antibody was affinity-purified from rabbit antiserum by affinity-chromatography using epitope-specific immunogen.

Specificity: CUTL1 antibody detects endogenous levels of total CUTL1 protein.

Reactivity: Human, Mouse

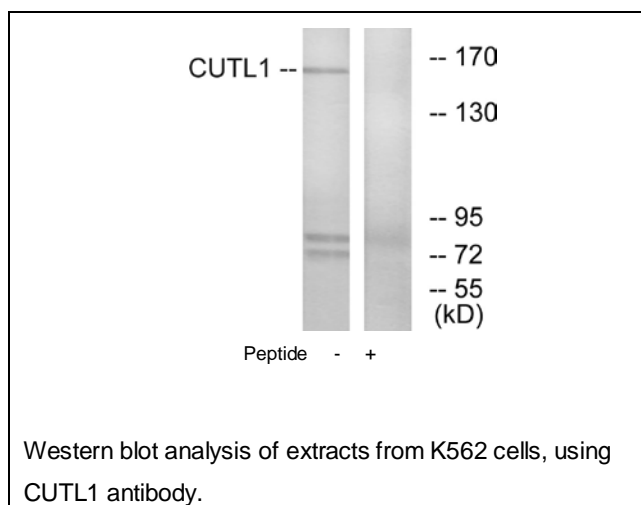
Applications: WB: 1:500~1:1000 ELISA: 1:40000

References:

Neufeld E.J., Nat. Genet. 1:50-55(1992).

Gloeckner G., Genome Res. 8:1060-1073(1998).

Rong Zeng W., Gene 241:75-85(2000).



For Research Use Only