



ETV6 Antibody

E11-10593C**Catalog Number:** E11-10593C**Concentration:** 1mg/ml**Swiss-Prot No.:** P41212**Other Names:** ETS translocation variant 6, ETS-related protein Tel1, ETV6, TEL1, Transcription factor ETV6**Storage/Stability:** Store at -20°C/1 year**Form of Antibody:** Rabbit IgG in phosphate buffered saline (without Mg²⁺ and Ca²⁺), pH 7.4, 150mM NaCl, 0.02% sodium azide and 50% glycerol.**Immunogen:** The antiserum was produced against synthesized peptide derived from internal of human ETV6.**Purification:** The antibody was affinity-purified from

rabbit antiserum by affinity-chromatography using epitope-specific immunogen.

Specificity: ETV6 antibody detects endogenous levels of total ETV6 protein.**Reactivity:** Human, Mouse, Rat**Applications:** WB: 1:500~1:1000 IF: 1:100~1:500

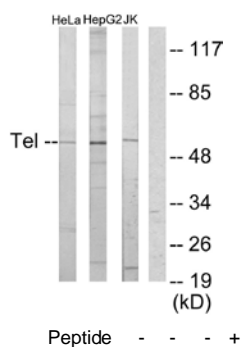
ELISA: 1:1000

References:

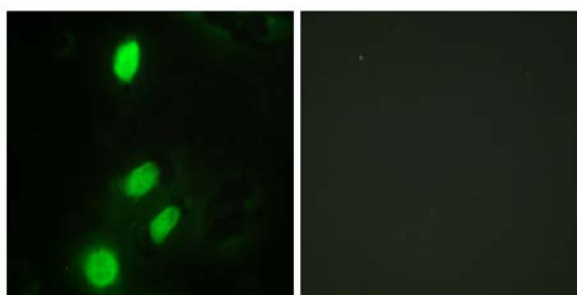
Golub T.R., Cell 77:307-316(1994).

Baens M., Genome Res. 6:404-413(1996).

Mullighan C.G., Nature 446:758-764(2007).



Western blot analysis of extracts from HeLa cells, HepG2 cells and Jurkat cells, using ETV6 antibody.



Immunofluorescence analysis of HeLa cells, using ETV6 antibody.

For Research Use Only