



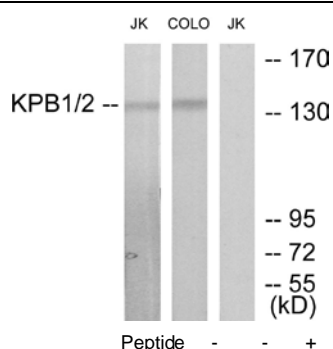
KPB1/2 Antibody

E11-10626C**Catalog Number:** E11-10626C**Concentration:** 1mg/ml**Swiss-Prot No.:** P46020**Other Names:** KPB1, PHKA, Phosphorylase B kinase alpha regulatory chain, skeletal muscle isoform, Phosphorylase kinase alpha M subunit, kinase PHKA1**Storage/Stability:** Store at -20°C/1 year**Form of Antibody:** Rabbit IgG in phosphate buffered saline (without Mg²⁺ and Ca²⁺), pH 7.4, 150mM NaCl, 0.02% sodium azide and 50% glycerol.**Immunogen:** The antiserum was produced against synthesized peptide derived from internal of human KPB1/2.**Purification:** The antibody was affinity-purified from rabbit antiserum by affinity-chromatography using epitope-specific immunogen.**Specificity:** KPB1/2 antibody detects endogenous levels of total KPB1/2 protein.**Reactivity:** Human, Mouse, Rat**Applications:** WB: 1:500~1:1000 IF: 1:100~1:500
ELISA: 1:20000**References:**

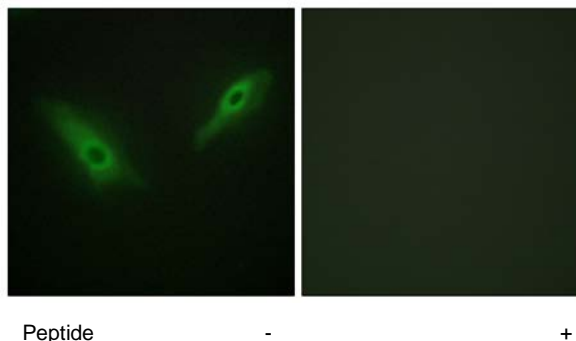
Wuellrich A., J. Biol. Chem. 268:23208-23214(1993).

The MGC Project Team, Genome Res. 14:2121-2127(2004).

Burwinkel B., Eur. J. Hum. Genet. 11:516-526(2003).



Western blot analysis of extracts from Jurkat cells and COLO205 cells, using KPB1/2 antibody.



Immunofluorescence analysis of HeLa cells, using KPB1/2 antibody.

For Research Use Only