

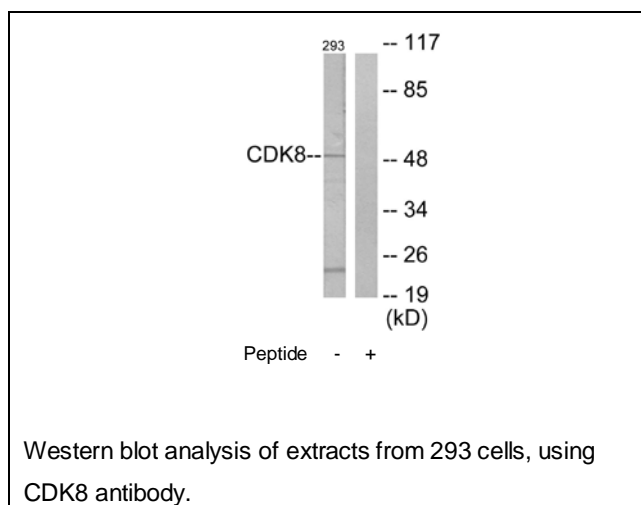


## CDK8 Antibody

**E11-10643C****Catalog Number:** E11-10643C**Concentration:** 1mg/ml**Swiss-Prot No.:** P49336**Other Names:** Cell division protein kinase 8, EC 2.7.11.22, EC 2.7.11.23, Protein kinase K35, CDK8**Storage/Stability:** Store at -20°C/1 year**Form of Antibody:** Rabbit IgG in phosphate buffered saline (without  $Mg^{2+}$  and  $Ca^{2+}$ ), pH 7.4, 150mM NaCl, 0.02% sodium azide and 50% glycerol.**Immunogen:** The antiserum was produced against synthesized peptide derived from N-terminal of human CDK8.**Purification:** The antibody was affinity-purified from rabbit antiserum by affinity-chromatography using epitope-specific immunogen.**Specificity:** CDK8 antibody detects endogenous levels of total CDK8 protein.**Reactivity:** Human, Mouse**Applications:** WB: 1:500~1:1000 ELISA: 1:10000**References:**

Tassan J.-P., Proc. Natl. Acad. Sci. U.S.A. 92:8871-8875(1995).

Fryer C.J., Mol. Cell 16:509-520(2004).

**For Research Use Only**