



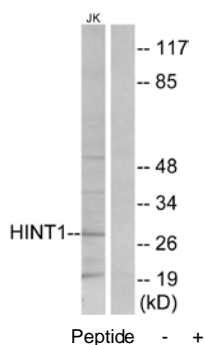
## HINT1 Antibody

**E11-10655C****Catalog Number:** E11-10655C**Concentration:** 1mg/ml**Swiss-Prot No.:** P49773**Other Names:** adenosine 5'-monophosphoramidase; EC 3.-.-.-; histidine triad nucleotide-binding 1; PKCI-1; PKCI1; PRKCNH1; protein kinase C inhibitor 1; protein kinase C-interacting 1**Storage/Stability:** Store at -20°C/1 year**Form of Antibody:** Rabbit IgG in phosphate buffered saline (without Mg<sup>2+</sup> and Ca<sup>2+</sup>), pH 7.4, 150mM NaCl, 0.02% sodium azide and 50% glycerol.**Immunogen:** The antiserum was produced against synthesized peptide derived from internal of human HINT1.**Purification:** The antibody was affinity-purified from rabbit antiserum by affinity-chromatography using epitope-specific immunogen.**Specificity:** HINT1 antibody detects endogenous levels of total HINT1 protein.**Reactivity:** Human, Mouse, Rat**Applications:** WB: 1:500~1:1000 IF: 1:100~1:500  
ELISA: 1:20000**References:**

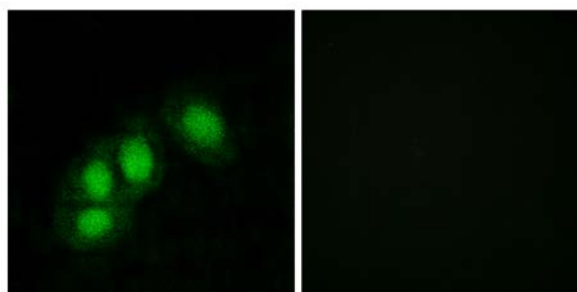
Brzoska P.M., Genomics 36:151-156(1996).

Brzoska P.M., Proc. Natl. Acad. Sci. U.S.A. 92:7824-7828(1995).

Ota T., Nat. Genet. 36:40-45(2004).



Western blot analysis of extracts from Jurkat cells, using HINT1 antibody.



Immunofluorescence analysis of HeLa cells, using HINT1 antibody.

**For Research Use Only**