



ERF Antibody

E11-10666C**Catalog Number:** E11-10666C**Concentration:** 1mg/ml**Swiss-Prot No.:** P50548**Other Names:** ETS-domain transcription factor ERF, Ets2 repressor factor**Storage/Stability:** Store at -20°C/1 year**Form of Antibody:** Rabbit IgG in phosphate buffered saline (without Mg²⁺ and Ca²⁺), pH 7.4, 150mM NaCl, 0.02% sodium azide and 50% glycerol.**Immunogen:** The antiserum was produced against synthesized peptide derived from internal of human ERF.**Purification:** The antibody was affinity-purified from

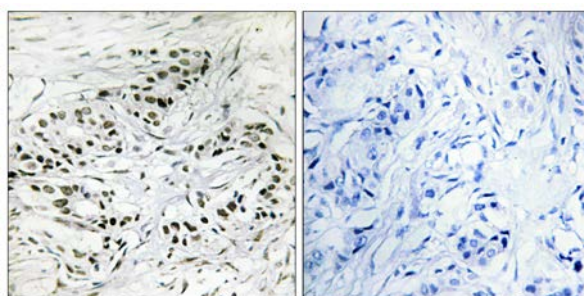
rabbit antiserum by affinity-chromatography using epitope-specific immunogen.

Specificity: ERF antibody detects endogenous levels of total ERF protein.**Reactivity:** Human (Identities = 100%, Positives = 100%);
Mouse (Identities = 100%, Positives = 100%)**Applications:** IHC: 1:50~1:100 ELISA: 1:40000**References:**

Sgouras D.N., EMBO J. 14:4781-4793(1995).

Grimwood J., Nature 428:529-535(2004).

Olsen J.V., Cell 127:635-648(2006).



Peptide

-

+

Immunohistochemistry analysis of paraffin-embedded human breast carcinoma tissue, using ERF antibody.

For Research Use Only