



## BRCA2 Antibody

E11-10682C

**Catalog Number:** E11-10682C

**Concentration:** 1mg/ml

**Swiss-Prot No.:** P51587

**Other Names:** Breast cancer type 2 susceptibility protein

**Storage/Stability:** Store at -20°C/1 year

**Form of Antibody:** Rabbit IgG in phosphate buffered saline (without  $Mg^{2+}$  and  $Ca^{2+}$ ), pH 7.4, 150mM NaCl, 0.02% sodium azide and 50% glycerol.

**Immunogen:** The antiserum was produced against synthesized peptide derived from N-terminal of human BRCA2.

**Purification:** The antibody was affinity-purified from

rabbit antiserum by affinity-chromatography using epitope-specific immunogen.

**Specificity:** BRCA2 antibody detects endogenous levels of total BRCA2 protein.

**Reactivity:** Human (Identities = 100%, Positives = 100%);  
Rat (Identities = 84%, Positives = 92%)

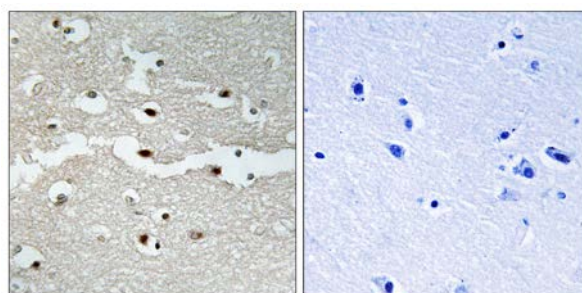
**Applications:** IHC: 1:50~1:100    ELISA: 1:20000

**References:**

Wooster R., Nature 378:789-792(1995).

Tavtigian S.V., Nat. Genet. 12:333-337(1996).

Dunham A., Nature 428:522-528(2004).



Peptide

-

+

Immunohistochemistry analysis of paraffin-embedded human brain tissue, using BRCA2 antibody.

**For Research Use Only**