



BMX Antibody

E11-10688C

Catalog Number: E11-10688C

Concentration: 1mg/ml

Swiss-Prot No.: P51813

Other Names: BMX, BMX NON-receptor tyrosine kinase, Bone marrow kinase BMX, Cytoplasmic BMX, EC 2.7.10.2, Epithelial and endothelial tyrosine kinase, NTK38, Protein tyrosine kinase BMX, kinase Etk

Storage/Stability: Store at -20°C/1 year

Form of Antibody: Rabbit IgG in phosphate buffered saline (without Mg^{2+} and Ca^{2+}), pH 7.4, 150mM NaCl, 0.02% sodium azide and 50% glycerol.

Immunogen: The antiserum was produced against synthesized peptide derived from N-terminal of human BMX.

Purification: The antibody was affinity-purified from rabbit antiserum by affinity-chromatography using epitope-specific immunogen.

Specificity: BMX antibody detects endogenous levels of total BMX protein.

Reactivity: Human, Mouse

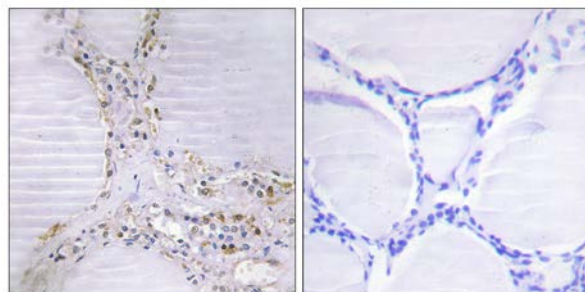
Applications: WB: 1:500~1:1000 IHC: 1:50~1:100
IF: 1:100~1:500 ELISA: 1:20000

References:

Tamagnone L., Oncogene 9:3683-3688(1994).

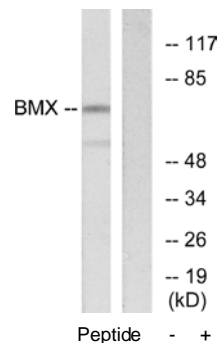
Qiu Y., Proc. Natl. Acad. Sci. U.S.A. 95:3644-3649(1998).

Fuortes M., Thesis (1994), Cornell University, United States.



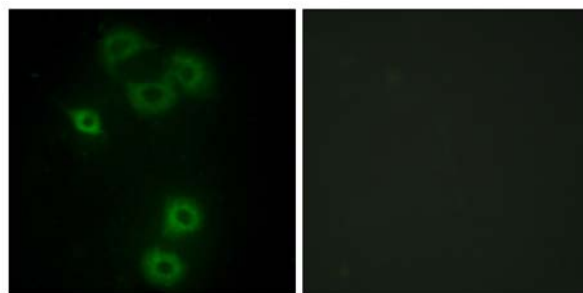
Peptide - +

Immunohistochemistry analysis of paraffin-embedded human thyroid gland tissue using BMX antibody.



Peptide - +

Western blot analysis of extracts from COS-7 cells, using BMX antibody.



Peptide - +

For Research Use Only

Immunofluorescence analysis of A549 cells, using BMX antibody.