



MAP2K6 Antibody

E11-10699C**Catalog Number:** E11-10699C**Concentration:** 1mg/ml**Swiss-Prot No.:** P52564**Other Names:** Dual specificity mitogen-activated protein kinase kinase 6, EC 2.7.12.2, MAP kinase kinase 6, MAP2K6, MAPK/ERK kinase 6, MAPKK 6, MEK6, MP2K6, Mitogen-activated protein kinase kinase 6, PRKMK6, SAPKK3, kinase MKK6**Storage/Stability:** Store at -20°C/1 year**Form of Antibody:** Rabbit IgG in phosphate buffered saline (without Mg²⁺ and Ca²⁺), pH 7.4, 150mM NaCl, 0.02% sodium azide and 50% glycerol.**Immunogen:** The antiserum was produced against

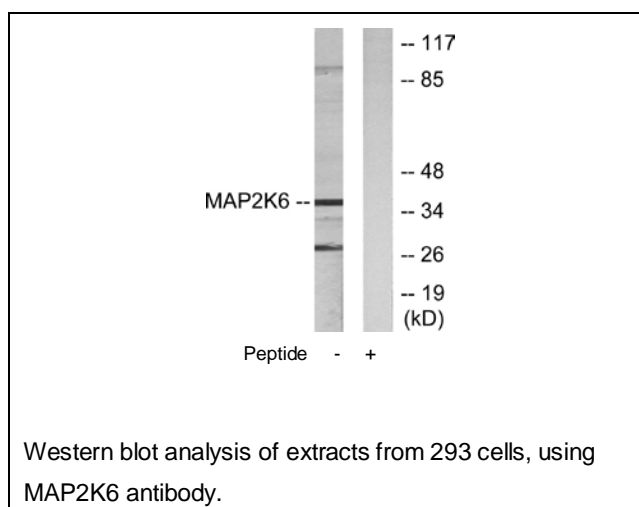
synthesized peptide derived from N-terminal of human MAP2K6.

Purification: The antibody was affinity-purified from rabbit antiserum by affinity-chromatography using epitope-specific immunogen.**Specificity:** MAP2K6 antibody detects endogenous levels of total MAP2K6 protein.**Reactivity:** Human, Mouse, Rat**Applications:** WB: 1:500~1:1000 ELISA: 1:10000**References:**

Raingeaud J., Mol. Cell. Biol. 16:1247-1255(1996).

Stein B., J. Biol. Chem. 271:11427-11433(1996).

Han J., J. Biol. Chem. 271:2886-2891(1996).

**For Research Use Only**