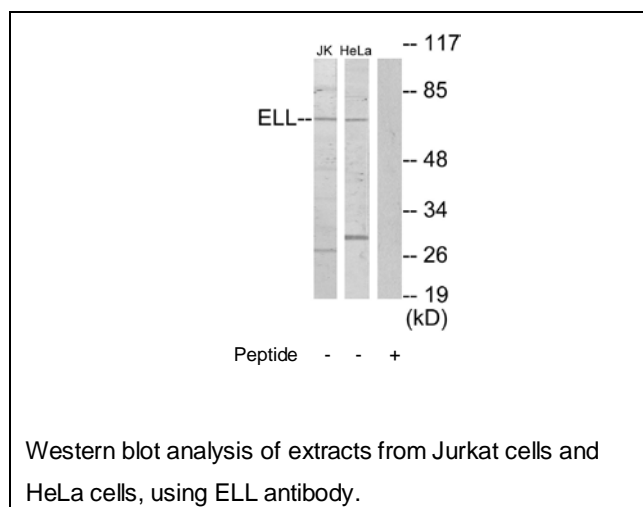




ELL Antibody

E11-10738C**Catalog Number:** E11-10738C**Concentration:** 1mg/ml**Swiss-Prot No.:** P55199**Other Names:** RNA polymerase II elongation factor ELL,
RNA polymerase II elongation factor ELL, ELL, C19orf17**Storage/Stability:** Store at -20°C/1 year**Form of Antibody:** Rabbit IgG in phosphate buffered
saline (without Mg²⁺ and Ca²⁺), pH 7.4, 150mM NaCl,
0.02% sodium azide and 50% glycerol.**Immunogen:** The antiserum was produced against
synthesized peptide derived from internal of human ELL.**Purification:** The antibody was affinity-purified fromrabbit antiserum by affinity-chromatography using
epitope-specific immunogen.**Specificity:** ELL antibody detects endogenous levels of
total ELL protein.**Reactivity:** Human, Mouse**Applications:** WB: 1:500~1:1000 ELISA: 1:20000**References:**Thirman M.J., Proc. Natl. Acad. Sci. U.S.A.
91:12110-12114(1994).

Simone F., Blood 98:201-209(2001).

Kong S.E., Proc. Natl. Acad. Sci. U.S.A.
102:10094-10098(2005).**For Research Use Only**