



CKS1 Antibody

E11-10766C

Catalog Number: E11-10766C**Concentration:** 1mg/ml**Swiss-Prot No.:** P61024**Other Names:** CKS-1, CKS1B, cyclin-dependent kinases regulatory subunit 1**Storage/Stability:** Store at -20°C/1 year**Form of Antibody:** Rabbit IgG in phosphate buffered saline (without Mg^{2+} and Ca^{2+}), pH 7.4, 150mM NaCl, 0.02% sodium azide and 50% glycerol.**Immunogen:** The antiserum was produced against synthesized peptide derived from N-terminal of human CKS1.**Purification:** The antibody was affinity-purified from

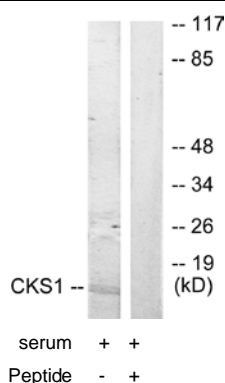
rabbit antiserum by affinity-chromatography using epitope-specific immunogen.

Specificity: CKS1 antibody detects endogenous levels of total CKS1 protein.**Reactivity:** Human, Mouse**Applications:** WB: 1:500~1:1000 IF: 1:100~1:500
ELISA: 1:20000**References:**

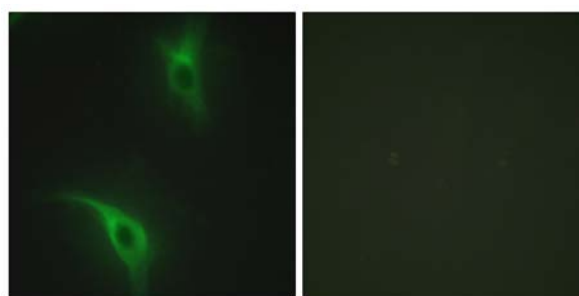
Richardson H.E., Genes Dev. 4:1332-1344(1990).

The MGC Project Team, Genome Res. 14:2121-2127(2004).

Arvai A.S., J. Mol. Biol. 249:835-842(1995).



Western blot analysis of extracts from Jurkat cells, treated with serum (20%, 15mins), using CKS1 antibody.



Peptide - +

Immunofluorescence analysis of HeLa cells, using CKS1 antibody.