



COPS2 Antibody

E11-10768C

Catalog Number: E11-10768 C

Concentration: 1mg/ml

Swiss-Prot No.: P61201

Other Names: ALIEN; COP9 constitutive photomorphogenic homolog subunit 2; COP9 constitutive photomorphogenic homolog subunit 2 (Arabidopsis); COP9 signalosome complex subunit 2; CSN2; JAB1-containing signalosome subunit 2; SGN2; signalosome subunit 2; thyroid receptor interacting protein 15; thyroid receptor-interacting protein 15; TRIP15

Storage/Stability: Store at -20°C/1 year

Form of Antibody: Rabbit IgG in phosphate buffered saline (without Mg^{2+} and Ca^{2+}), pH 7.4, 150mM NaCl, 0.02% sodium azide and 50% glycerol.

Immunogen: The antiserum was produced against

synthesized peptide derived from internal of human COPS2.

Purification: The antibody was affinity-purified from rabbit antiserum by affinity-chromatography using epitope-specific immunogen.

Specificity: COPS2 antibody detects endogenous levels of total COPS2 protein.

Reactivity: Human, Mouse, Rat

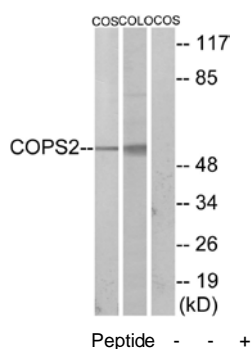
Applications: WB: 1:500~1:1000 IF: 1:100~1:500
ELISA: 1:20000

References:

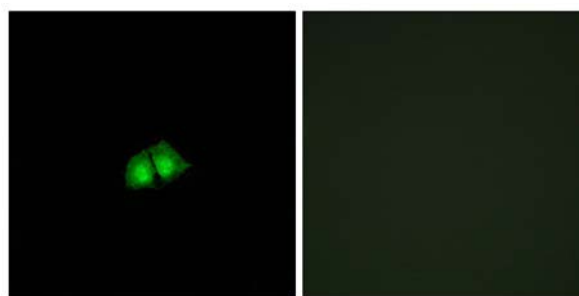
Hu R.-M., Proc. Natl. Acad. Sci. U.S.A. 97:9543-9548(2000).

Lee J.W., Mol. Endocrinol. 9:243-254(1995).

Dressel U., Mol. Cell. Biol. 19:3383-3394(1999).



Western blot analysis of extracts from COS-7 cells and COLO205 cells, using COPS2 antibody.



Immunofluorescence analysis of A549 cells, using COPS2 antibody.

For Research Use Only