



ITGB4 (Phospho-Tyr1510) Antibody

E11-1078A

Catalog Number: E11-1078A

Concentration: 1mg/ml

Swiss-Prot No.: P16144

Other Names: CD104 antigen, GP150, ITB4, integrin beta-4, integrin beta-4C

All Sites: Human: Tyr1510; Mouse: Tyr1318; Rat: Tyr1441

Storage/Stability: Store at -20°C/1 year

Form of Antibody: Rabbit IgG in phosphate buffered saline (without Mg^{2+} and Ca^{2+}), pH 7.4, 150mM NaCl, 0.02% sodium azide and 50% glycerol.

Immunogen: The antiserum was produced against synthesized phosphopeptide derived from human ITGB4 around the phosphorylation site of tyrosine 1510 (R-D-Y^P-S-T).

Purification: The antibody was affinity-purified from

rabbit antiserum by affinity-chromatography using epitope-specific phosphopeptide. The antibody against non-phosphopeptide was removed by chromatography using non-phosphopeptide corresponding to the phosphorylation site.

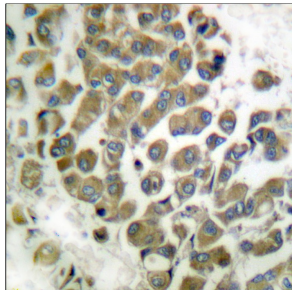
Specificity: ITGB4 (Phospho-Tyr1510) antibody detects endogenous levels of ITGB4 only when phosphorylated at tyrosine 1510.

Reactivity: Human, Mouse, Rat

Applications: WB: 1:500~1:1000 IHC: 1:50~1:100
ELISA: 1:10000

References:

Suzuki S., EMBO J. 9:757-763(1990).
Hogervorst F., EMBO J. 9:765-770(1990).
Tamura R.N., J. Cell Biol. 111:1593-1604(1990).

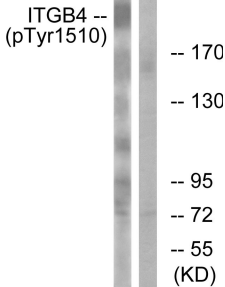
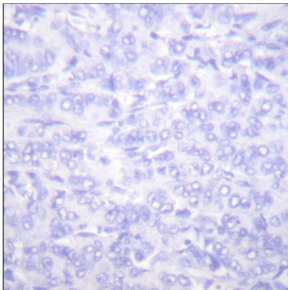


P-peptide

-

+

Immunohistochemistry analysis of paraffin-embedded human breast carcinoma tissue using ITGB4 (Phospho-Tyr1510) antibody.



Na₂VO₃ + +
P-peptide - +

Western blot analysis of extracts from HepG2 cells, treated with Na₂VO₃ (0.3nM, 40mins), using ITGB4 (Phospho-Tyr1510) antibody.