



## RBM6 Antibody

E11-10790C

**Catalog Number:** E11-10790 C

**Concentration:** 1mg/ml

**Swiss-Prot No.:** P78332

**Other Names:** DEF3, Lung cancer antigen NY-LU-12, Protein G16, RNA binding motif protein 6, RNA-binding protein 6, RNA-binding protein DEF-3

**Storage/Stability:** Store at -20°C/1 year

**Form of Antibody:** Rabbit IgG in phosphate buffered saline (without  $Mg^{2+}$  and  $Ca^{2+}$ ), pH 7.4, 150mM NaCl, 0.02% sodium azide and 50% glycerol.

**Immunogen:** The antiserum was produced against synthesized peptide derived from internal of human RBM6.

**Purification:** The antibody was affinity-purified from rabbit antiserum by affinity-chromatography using epitope-specific immunogen.

**Specificity:** RBM6 antibody detects endogenous levels of total RBM6 protein.

**Reactivity:** Human, Mouse

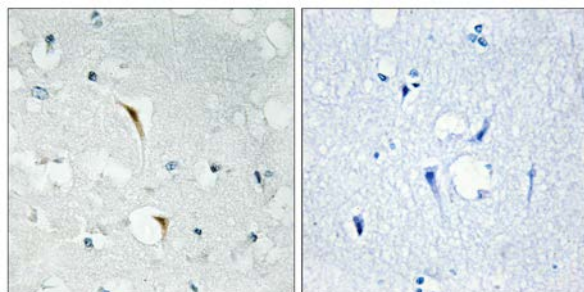
**Applications:** WB: 1:500~1:1000 IHC: 1:50~1:100  
IF: 1:100~1:500 ELISA: 1:20000

**References:**

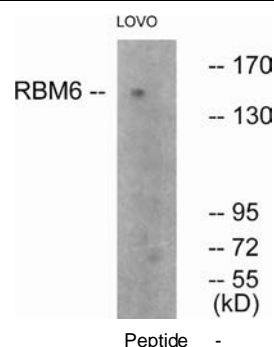
Gure A.O., Cancer Res. 58:1034-1041(1998).

Lerman M.I., Cancer Res. 60:6116-6133(2000).

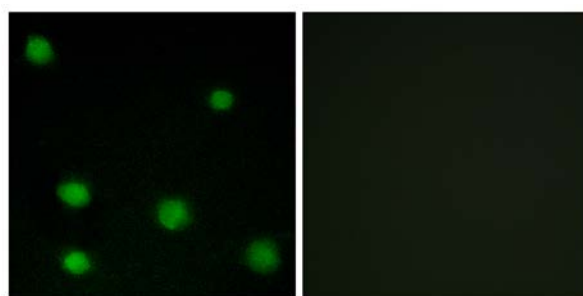
Beausoleil S.A., Proc. Natl. Acad. Sci. U.S.A. 101:12130-12135(2004).



Immunohistochemistry analysis of paraffin-embedded human brain tissue using RBM6 antibody.



Western blot analysis of extracts from LOVO cells, using RBM6 antibody.



Fluorescence microscopy analysis of cells.

**For Research Use Only**

Immunofluorescence analysis of COS-7 cells, using  
RBM6 antibody.