



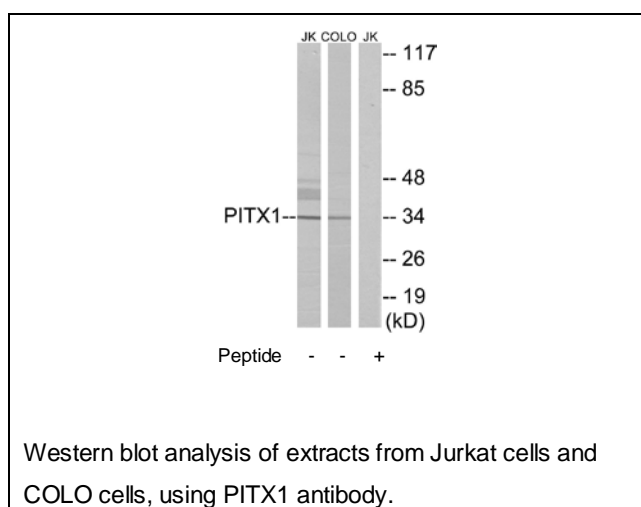
PITX1 Antibody

E11-10791C**Catalog Number:** E11-10791 C**Concentration:** 1mg/ml**Swiss-Prot No.:** P78337**Other Names:** Pituitary homeobox 1, Hindlimb-expressed homeobox protein backfoot, PITX1, BFT, PTX1**Storage/Stability:** Store at -20°C/1 year**Form of Antibody:** Rabbit IgG in phosphate buffered saline (without Mg²⁺ and Ca²⁺), pH 7.4, 150mM NaCl, 0.02% sodium azide and 50% glycerol.**Immunogen:** The antiserum was produced against synthesized peptide derived from internal of human PITX1.**Purification:** The antibody was affinity-purified from rabbit antiserum by affinity-chromatography using epitope-specific immunogen.**Specificity:** PITX1 antibody detects endogenous levels of total PITX1 protein.**Reactivity:** Human, Mouse, Rat**Applications:** WB: 1:500~1:1000 ELISA: 1:1000**References:**

Shang J., Genomics 40:108-113(1997).

Schmutz J., Nature 431:268-274(2004).

Olsen J.V., Cell 127:635-648(2006).

**For Research Use Only**