



## MAP3K9 Antibody

E11-10801C

**Catalog Number:** E11-10801 C

**Concentration:** 1mg/ml

**Swiss-Prot No.:** P80192

**Other Names:** EC 2.7.11.25, M3K9, PRKE1, mixed-lineage protein kinase 1

**Storage/Stability:** Store at -20°C/1 year

**Form of Antibody:** Rabbit IgG in phosphate buffered saline (without Mg<sup>2+</sup> and Ca<sup>2+</sup>), pH 7.4, 150mM NaCl, 0.02% sodium azide and 50% glycerol.

**Immunogen:** The antiserum was produced against synthesized peptide derived from internal of human MAP3K9.

**Purification:** The antibody was affinity-purified from

rabbit antiserum by affinity-chromatography using epitope-specific immunogen.

**Specificity:** MAP3K9 antibody detects endogenous levels of total MAP3K9 protein.

**Reactivity:** Human (Identities = 100%, Positives = 100%);  
Mouse (Identities = 100%, Positives = 100%)

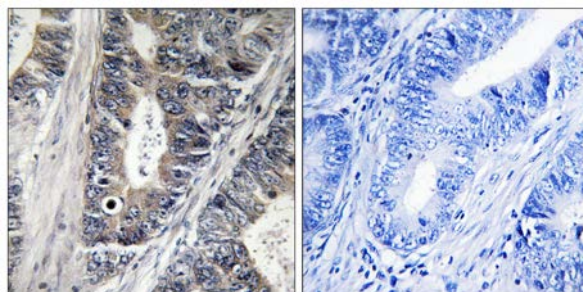
**Applications:** IHC: 1:50~1:100 ELISA: 1:20000

**References:**

Durkin J.T., Biochemistry 43:16348-16355(2004).

The MGC Project Team, Genome Res. 14:2121-2127(2004).

Dorow D.S., Eur. J. Biochem. 213:701-710(1993).



Peptide - +

Immunohistochemistry analysis of paraffin-embedded human colon carcinoma tissue, using MAP3K9 antibody.

**For Research Use Only**