



CDKL1 Antibody

E11-10820C

Catalog Number: E11-10820 C

Concentration: 1mg/ml

Swiss-Prot No.: Q00532

Other Names: Cyclin-dependent kinase-like 1, EC 2.7.11.22, Serine/threonine-protein kinase KKIALRE, Protein kinase p42 KKIALRE, CDKL1

Storage/Stability: Store at -20°C/1 year

Form of Antibody: Rabbit IgG in phosphate buffered saline (without Mg^{2+} and Ca^{2+}), pH 7.4, 150mM NaCl, 0.02% sodium azide and 50% glycerol.

Immunogen: The antiserum was produced against synthesized peptide derived from internal of human CDKL1.

Purification: The antibody was affinity-purified from rabbit antiserum by affinity-chromatography using epitope-specific immunogen.

Specificity: CDKL1 antibody detects endogenous levels of total CDKL1 protein.

Reactivity: Human, Rat

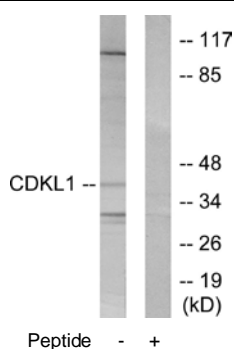
Applications: WB: 1:500~1:1000 ELISA: 1:10000

References:

Meyerson M., EMBO J. 11:2909-2917(1992).

Livingston R.J., Submitted (JAN-2004) to the EMBL/GenBank/DDBJ databases.

Taglienti C.A., Oncogene 13:2563-2574(1996).



For Research Use Only