



## K6PP Antibody

E11-10836C

**Catalog Number:** E11-10836 C

**Concentration:** 1mg/ml

**Swiss-Prot No.:** Q01813

**Other Names:** 6-phosphofructokinase type C, 6-phosphofructokinase, platelet type, EC 2.7.1.11, K6PP, PFK, platelet type, PFK-C, PFKF, phosphofructo-1-kinase isozyme C, phosphofructokinase 1, phosphohexokinase

**Storage/Stability:** Store at -20°C/1 year

**Form of Antibody:** Rabbit IgG in phosphate buffered saline (without  $Mg^{2+}$  and  $Ca^{2+}$ ), pH 7.4, 150mM NaCl, 0.02% sodium azide and 50% glycerol.

**Immunogen:** The antiserum was produced against synthesized peptide derived from internal of human K6PP.

**Purification:** The antibody was affinity-purified from

rabbit antiserum by affinity-chromatography using epitope-specific immunogen.

**Specificity:** K6PP antibody detects endogenous levels of total K6PP protein.

**Reactivity:** Human, Mouse, Rat

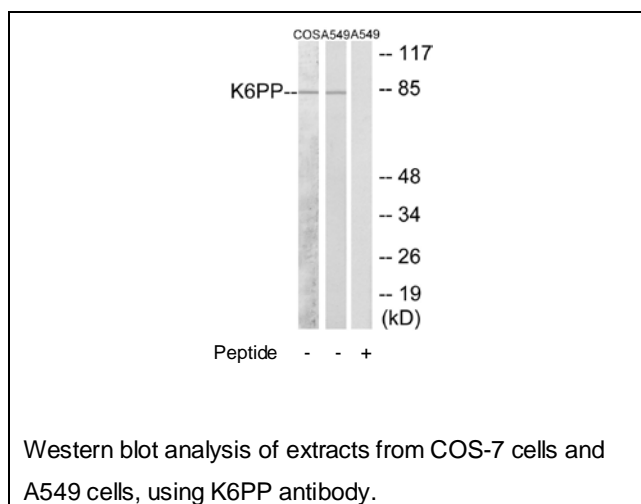
**Applications:** WB: 1:500~1:1000 ELISA: 1:1000

**References:**

Eto K., Biochem. Biophys. Res. Commun. 198:990-998(1994).

Simpson C.J., Biochem. Biophys. Res. Commun. 180:197-203(1991).

Beausoleil S.A., Proc. Natl. Acad. Sci. U.S.A. 101:12130-12135(2004).



**For Research Use Only**