



## MEF2B Antibody

**E11-10843C**

**Catalog Number:** E11-10843 C

**Concentration:** 1mg/ml

**Swiss-Prot No.:** Q02080

**Other Names:** MDS1-EVI1, PRDM3, myelodysplasia syndrome 1, myelodysplasia syndrome-associated 1

**Storage/Stability:** Store at -20°C/1 year

**Form of Antibody:** Rabbit IgG in phosphate buffered saline (without  $Mg^{2+}$  and  $Ca^{2+}$ ), pH 7.4, 150mM NaCl, 0.02% sodium azide and 50% glycerol.

**Immunogen:** The antiserum was produced against synthesized peptide derived from internal of human MEF2B.

**Purification:** The antibody was affinity-purified from rabbit antiserum by affinity-chromatography using epitope-specific immunogen.

**Specificity:** MEF2B antibody detects endogenous levels of total MEF2B protein.

**Reactivity:** Human, Mouse

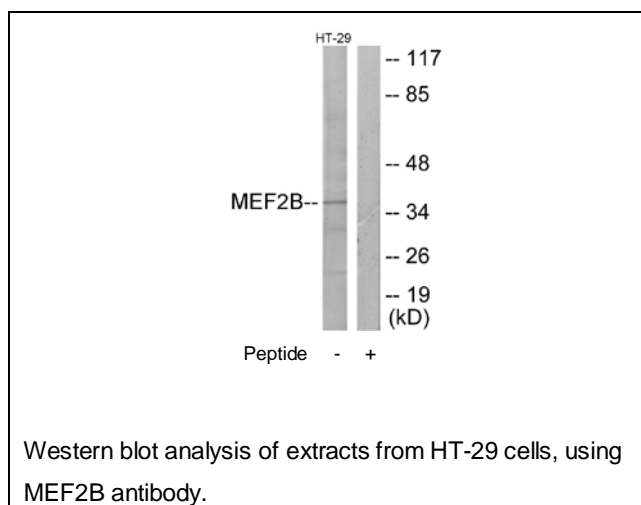
**Applications:** WB: 1:500~1:1000      ELISA: 1:10000

**References:**

Yu Y.-T., Genes Dev. 6:1783-1798(1992).

Pollock R., Genes Dev. 5:2327-2341(1991).

Grimwood J., Nature 428:529-535(2004).



**For Research Use Only**