



## CREM Antibody

E11-10864C

**Catalog Number:** E11-10864 C

**Concentration:** 1mg/ml

**Swiss-Prot No.:** Q03060

**Other Names:** CREM-alpha, cAMP-responsive element modulator, cAMP-responsive element modulator, alpha isoform CREM, CREM-beta, cAMP-responsive element modulator, cAMP-responsive element modulator, beta isoform CREM-BCEFGIalpha, Tau

**Storage/Stability:** Store at -20°C/1 year

**Form of Antibody:** Rabbit IgG in phosphate buffered saline (without  $Mg^{2+}$  and  $Ca^{2+}$ ), pH 7.4, 150mM NaCl, 0.02% sodium azide and 50% glycerol.

**Immunogen:** The antiserum was produced against

synthesized peptide derived from internal of human CREM.

**Purification:** The antibody was affinity-purified from rabbit antiserum by affinity-chromatography using epitope-specific immunogen.

**Specificity:** CREM antibody detects endogenous levels of total CREM protein.

**Reactivity:** Human, Mouse, Rat

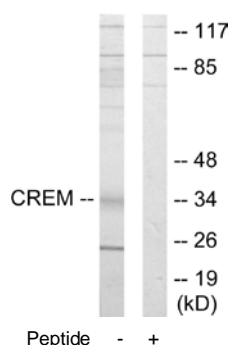
**Applications:** WB: 1:500~1:1000 ELISA: 1:20000

**References:**

Masquillier D., Cell Growth Differ. 4:931-937(1993).

Meyer T.E., Nucleic Acids Res. 20:6106-6106(1992).

Fujimoto T., J. Biochem. 115:298-303(1994).



Western blot analysis of extracts from K562 cells, using CREM antibody.

**For Research Use Only**