



## PSMD2 Antibody

**E11-10956C****Catalog Number:** E11-10956 C**Concentration:** 1mg/ml**Swiss-Prot No.:** Q13200**Other Names:** 26S proteasome non-ATPase regulatory subunit 2, 26S proteasome regulatory subunit RPN1, 26S proteasome regulatory subunit S2, 26S proteasome subunit p97, 55.11 protein, TRAP2, Tumor necrosis factor type 1 receptor-associated protein 2**Storage/Stability:** Store at -20°C/1 year**Form of Antibody:** Rabbit IgG in phosphate buffered saline (without  $Mg^{2+}$  and  $Ca^{2+}$ ), pH 7.4, 150mM NaCl, 0.02% sodium azide and 50% glycerol.**Immunogen:** The antiserum was produced against

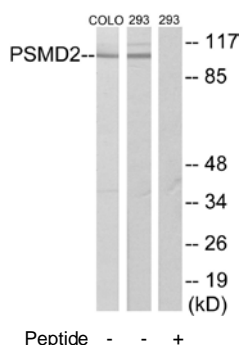
synthesized peptide derived from internal of human PSMD2.

**Purification:** The antibody was affinity-purified from rabbit antiserum by affinity-chromatography using epitope-specific immunogen.**Specificity:** PSMD2 antibody detects endogenous levels of total PSMD2 protein.**Reactivity:** Human, Mouse, Rat**Applications:** WB: 1:500~1:1000 ELISA: 1:20000**References:**

Tsurumi C., Eur. J. Biochem. 239:912-921(1996).

Dunbar J.D., J. Immunol. 158:4252-4259(1997).

Olsen J.V., Cell 127:635-648(2006).

**For Research Use Only**