



JIP2 Antibody

E11-10973C

Catalog Number: E11-10973 C**Concentration:** 1mg/ml**Swiss-Prot No.:** Q13387**Other Names:** C-jun-amino-terminal kinase-interacting protein 2, JNK-interacting protein 2, JIP-2, JNK MAP kinase scaffold protein 2, Islet-brain-2, IB-2, Mitogen-activated protein kinase 8-interacting protein 2, MAPK8IP2, IB2, JIP2, PRKM8IPL**Storage/Stability:** Store at -20°C/1 year**Form of Antibody:** Rabbit IgG in phosphate buffered saline (without Mg^{2+} and Ca^{2+}), pH 7.4, 150mM NaCl, 0.02% sodium azide and 50% glycerol.**Immunogen:** The antiserum was produced against

synthesized peptide derived from internal of human JIP2.

Purification: The antibody was affinity-purified from rabbit antiserum by affinity-chromatography using epitope-specific immunogen.**Specificity:** JIP2 antibody detects endogenous levels of total JIP2 protein.**Reactivity:** Human, Mouse, Rat**Applications:** WB: 1:500~1:1000 IHC: 1:50~1:100

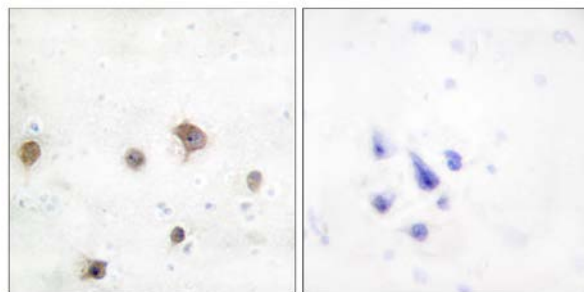
IF: 1:100~1:500 ELISA: 1:5000

References:

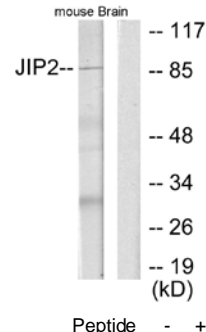
Yasuda J., Mol. Cell. Biol. 19:7245-7254(1999).

Negri S., Genomics 64:324-330(2000).

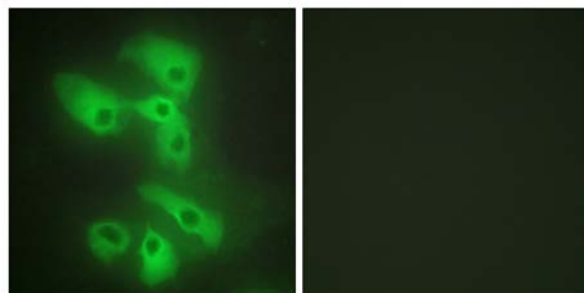
Dunham I., Nature 402:489-495(1999).



Immunohistochemistry analysis of paraffin-embedded human brain tissue using JIP2 antibody.



Western blot analysis of extracts from mouse brain cells, using JIP2 antibody.



Peptide

-

+

Immunofluorescence analysis of HeLa cells, using JIP2 antibody.