



Myelodysplasia Syndrome 1 Antibody

E11-10980C

Catalog Number: E11-10980 C

Concentration: 1mg/ml

Swiss-Prot No.: Q13465

Other Names: Myelodysplasia syndrome-associated protein 1, Myelodysplasia syndrome 1 protein

Storage/Stability: Store at -20°C/1 year

Form of Antibody: Rabbit IgG in phosphate buffered saline (without Mg^{2+} and Ca^{2+}), pH 7.4, 150mM NaCl, 0.02% sodium azide and 50% glycerol.

Immunogen: The antiserum was produced against synthesized peptide derived from N-terminal of human Myelodysplasia Syndrome 1.

Purification: The antibody was affinity-purified from

rabbit antiserum by affinity-chromatography using epitope-specific immunogen.

Specificity: Myelodysplasia Syndrome 1 antibody detects endogenous levels of total Myelodysplasia Syndrome 1 protein.

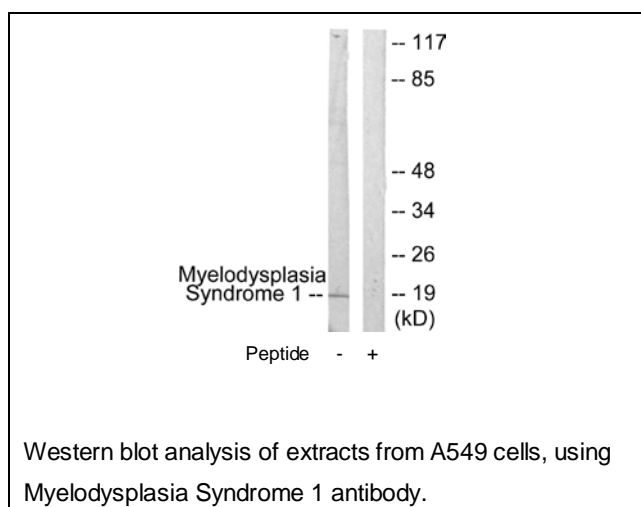
Reactivity: Human

Applications: WB: 1:500~1:1000 ELISA: 1:1000

References:

Fears S., Proc. Natl. Acad. Sci. U.S.A. 93:1642-1647(1996).

The MGC Project Team, Genome Res. 14:2121-2127(2004).



For Research Use Only