



## Breast Tumor Kinase Antibody

E11-11007C

**Catalog Number:** E11-11007 C

**Concentration:** 1mg/ml

**Swiss-Prot No.:** Q13882

**Other Names:** Tyrosine-protein kinase 6, EC 2.7.10.2, Breast tumor kinase, Tyrosine-protein kinase BRK, BRK

**Storage/Stability:** Store at -20°C/1 year

**Form of Antibody:** Rabbit IgG in phosphate buffered saline (without  $Mg^{2+}$  and  $Ca^{2+}$ ), pH 7.4, 150mM NaCl, 0.02% sodium azide and 50% glycerol.

**Immunogen:** The antiserum was produced against synthesized peptide derived from N-terminal of human Breast Tumor Kinase.

**Purification:** The antibody was affinity-purified from rabbit antiserum by affinity-chromatography using epitope-specific immunogen.

**Specificity:** Breast Tumor Kinase antibody detects endogenous levels of total Breast Tumor Kinase protein.

**Reactivity:** Human, Mouse

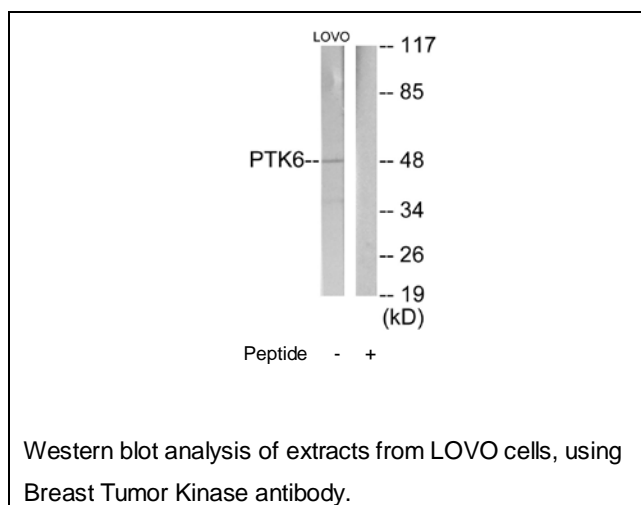
**Applications:** WB: 1:500~1:1000 ELISA: 1:20000

**References:**

Mitchell P.J., Oncogene 9:2383-2390(1994).

Lee H.-Y., Mol. Cells 8:401-407(1998).

Deloukas P., Nature 414:865-871(2001).



**For Research Use Only**