



CBF β Antibody

E11-11013C

Catalog Number: E11-11013 C

Concentration: 1mg/ml

Swiss-Prot No.: Q13951

Other Names: Core-binding factor subunit beta, CBF-beta, Polyomavirus enhancer-binding protein 2 beta subunit, PEBP2-beta, PEA2-beta, SL3-3 enhancer factor 1 subunit beta, SL3/AKV core-binding factor beta subunit, CBFB

Storage/Stability: Store at -20°C/1 year

Form of Antibody: Rabbit IgG in phosphate buffered saline (without Mg^{2+} and Ca^{2+}), pH 7.4, 150mM NaCl, 0.02% sodium azide and 50% glycerol.

Immunogen: The antiserum was produced against synthesized peptide derived from internal of human CBF

β .

Purification: The antibody was affinity-purified from rabbit antiserum by affinity-chromatography using epitope-specific immunogen.

Specificity: CBF β antibody detects endogenous levels of total CBF β protein.

Reactivity: Human, Mouse, Rat

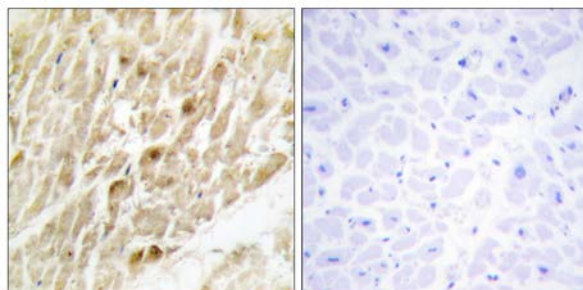
Applications: WB: 1:500~1:1000 IHC: 1:50~1:100
ELISA: 1:20000

References:

Hajra A., Genomics 26:571-579(1995).

Liu P., Science 261:1041-1044(1993).

Warren A.J., EMBO J. 19:3004-3015(2000).

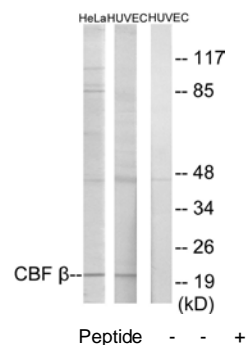


Peptide

-

+

Immunohistochemistry analysis of paraffin-embedded human heart tissue using CBF β antibody.



Western blot analysis of extracts from HeLa cells and HUVEC cells, using CBF β antibody.