



GAS6 Antibody

E11-11029C

Catalog Number: E11-11029C

Concentration: 1mg/ml

Swiss-Prot No.: Q14393

Other Names: GAS-6, AXL receptor, tyrosine kinase ligand

Storage/Stability: Store at -20°C/1 year

Form of Antibody: Rabbit IgG in phosphate buffered saline (without Mg^{2+} and Ca^{2+}), pH 7.4, 150mM NaCl, 0.02% sodium azide and 50% glycerol.

Immunogen: The antiserum was produced against synthesized peptide derived from internal of human GAS6.

Purification: The antibody was affinity-purified from rabbit antiserum by affinity-chromatography using epitope-specific immunogen.

Specificity: GAS6 antibody detects endogenous levels of total GAS6 protein.

Reactivity: Human

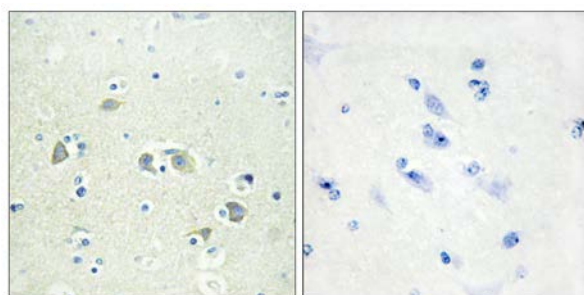
Applications: WB: 1:500~1:1000 IHC: 1:50~1:100
ELISA: 1:40000

References:

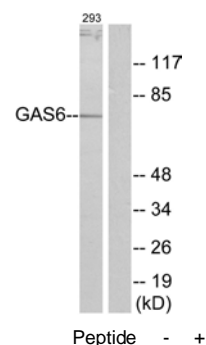
Manfioletti G., Mol. Cell. Biol. 13:4976-4985(1993).

Ota T., Nat. Genet. 36:40-45(2004).

Varnum B.C., Nature 373:623-626(1995).



Immunohistochemistry analysis of paraffin-embedded human brain tissue using GAS6 antibody.



Western blot analysis of extracts from 293 cells, using GAS6 antibody.