



K0100 Antibody

E11-11042C

Catalog Number: E11-11042 C

Concentration: 1mg/ml

Swiss-Prot No.: Q14667

Other Names: Breast cancer overexpressed gene 1 protein; Antigen MLAA-22

Storage/Stability: Store at -20°C/1 year

Form of Antibody: Rabbit IgG in phosphate buffered saline (without Mg^{2+} and Ca^{2+}), pH 7.4, 150mM NaCl, 0.02% sodium azide and 50% glycerol.

Immunogen: The antiserum was produced against synthesized peptide derived from internal of human K0100.

Purification: The antibody was affinity-purified from rabbit antiserum by affinity-chromatography using epitope-specific immunogen.

Specificity: K0100 antibody detects endogenous levels of total K0100 protein.

Reactivity: Human (Identities = 100%, Positives = 100%)

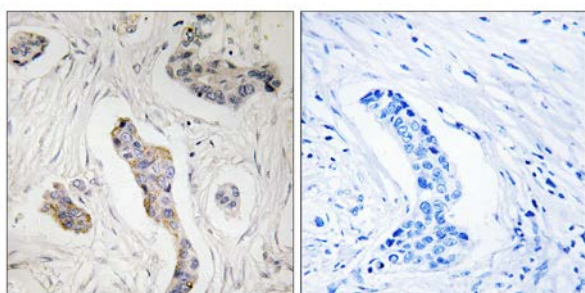
Applications: IHC: 1:50~1:100 IF: 1:100~1:500
ELISA: 1:20000

References:

Song J., Biochim. Biophys. Acta 1760:62-69(2006).

Nagase T., DNA Res. 2:37-43(1995).

Chen G., Leuk. Res. 29:503-509(2005).

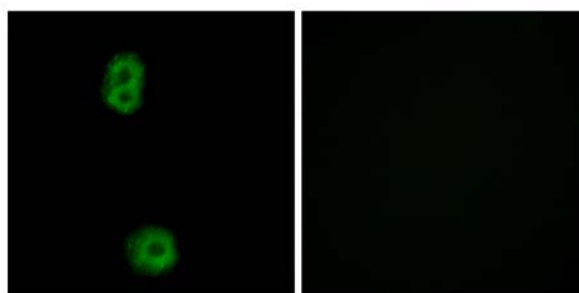


Peptide

-

+

Immunohistochemistry analysis of paraffin-embedded human breast carcinoma tissue, using K0100 antibody.



Peptide

-

+

Immunofluorescence analysis of MCF-7 cells, using K0100 antibody.

For Research Use Only