



CHD4 Antibody

E11-11048C

Catalog Number: E11-11048 C

Concentration: 1mg/ml

Swiss-Prot No.: Q14839

Other Names: EC 3.6.1.-; ATP-dependent helicase CHD4; CHD-4; Mi-2 autoantigen 218 kDa protein; Mi2-beta

Storage/Stability: Store at -20°C/1 year

Form of Antibody: Rabbit IgG in phosphate buffered saline (without Mg^{2+} and Ca^{2+}), pH 7.4, 150mM NaCl, 0.02% sodium azide and 50% glycerol.

Immunogen: The antiserum was produced against synthesized peptide derived from internal of human CHD4.

Purification: The antibody was affinity-purified from

rabbit antiserum by affinity-chromatography using epitope-specific immunogen.

Specificity: CHD4 antibody detects endogenous levels of total CHD4 protein.

Reactivity: Human (Identities = 100%, Positives = 100%);
Mouse (Identities = 100%, Positives = 100%)

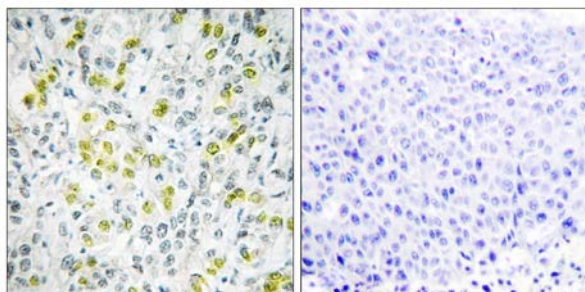
Applications: IHC: 1:50~1:100 IF: 1:100~1:500
ELISA: 1:20000

References:

Seelig H.P., Arthritis Rheum. 38:1389-1399(1995).

Schmidt D.R., Biochemistry 38:14711-14717(1999).

Shimono Y., J. Biol. Chem. 278:51638-51645(2003).

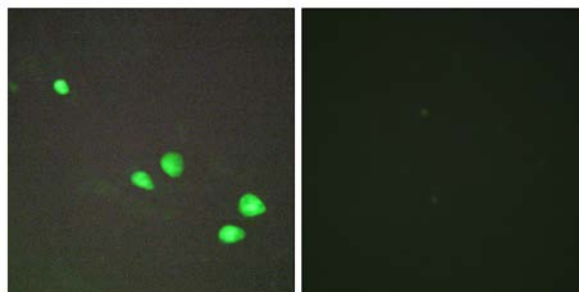


Peptide

-

+

Immunohistochemistry analysis of paraffin-embedded human liver carcinoma tissue, using CHD4 antibody.



Peptide

-

+

Immunofluorescence analysis of HepG2 cells, using CHD4 antibody.

For Research Use Only