



NF-κB p100 (Phospho-Ser872) Antibody

E11-1104A

Catalog Number: E11-1104A

Concentration: 1mg/ml

Swiss-Prot No.: Q00653

Other Names: DNA-binding factor KBF2, H2TF1, Lymphocyte translocation chromosome 10, Lyt10, NFKB2, Nuclear factor NF-kappa-B p100 subunit, Oncogene Lyt-10

All Sites: Human: Ser872; Mouse: Ser871

Storage/Stability: Store at -20°C/1 year

Form of Antibody: Rabbit IgG in phosphate buffered saline (without Mg²⁺ and Ca²⁺), pH 7.4, 150mM NaCl, 0.02% sodium azide and 50% glycerol.

Immunogen: The antiserum was produced against synthesized phosphopeptide derived from human NF-κB p100 around the phosphorylation site of serine 872 (S-Q-S^P-V-E).

Purification: The antibody was affinity-purified from rabbit antiserum by affinity-chromatography using epitope-specific phosphopeptide. The antibody against non-phosphopeptide was removed by chromatography using non-phosphopeptide corresponding to the phosphorylation site.

Specificity: NF-κB p100 (Phospho-Ser872) antibody detects endogenous levels of NF-κB p100 only when phosphorylated at serine 872.

Reactivity: Human, Mouse

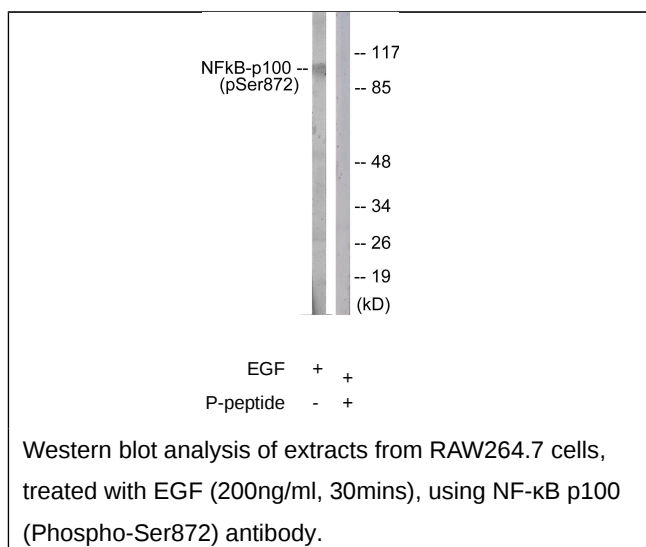
Applications: WB: 1:500~1:1000 ELISA: 1:10000

References:

Schmid R.M., Nature 352:733-736(1991).

Bours V., Mol. Cell. Biol. 12:685-695(1992).

Thakur S., Oncogene 9:2335-2344(1994).



For Research Use Only