



PSMD2 Antibody

E11-11058C

Catalog Number: E11-11058 C

Concentration: 1mg/ml

Swiss-Prot No.: Q13200

Other Names: 26S proteasome non-ATPase regulatory subunit 2, 26S proteasome regulatory subunit RPN1, 26S proteasome regulatory subunit S2, 26S proteasome subunit p97, Tumor necrosis factor type 1 receptor-associated protein 2, 55.11 protein, PSMD2, TRAP2

Storage/Stability: Store at -20°C/1 year

Form of Antibody: Rabbit IgG in phosphate buffered saline (without Mg^{2+} and Ca^{2+}), pH 7.4, 150mM NaCl, 0.02% sodium azide and 50% glycerol.

Immunogen: The antiserum was produced against

synthesized peptide derived from N-terminal of human PSMD2.

Purification: The antibody was affinity-purified from rabbit antiserum by affinity-chromatography using epitope-specific immunogen.

Specificity: PSMD2 antibody detects endogenous levels of total PSMD2 protein.

Reactivity: Human, Mouse, Rat

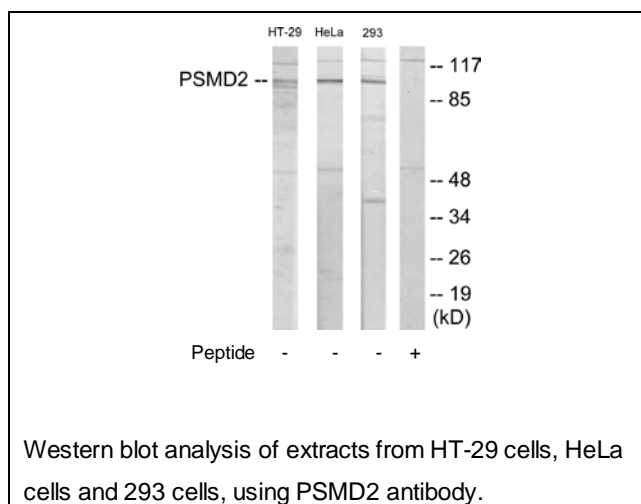
Applications: WB: 1:500~1:1000 ELISA: 1:20000

References:

Tsurumi C., Eur. J. Biochem. 239:912-921(1996).

The MGC Project Team, Genome Res. 14:2121-2127(2004).

Dunbar J.D., J. Immunol. 158:4252-4259(1997).



For Research Use Only