



TSC22D1 Antibody

E11-11099C

Catalog Number: E11-11099 C

Concentration: 1mg/ml

Swiss-Prot No.: Q15714

Other Names: TGFB-stimulated clone 22, TGFB1I4, TSC22, cerebral protein 2, regulatory protein TSC-22

Storage/Stability: Store at -20°C/1 year

Form of Antibody: Rabbit IgG in phosphate buffered saline (without Mg^{2+} and Ca^{2+}), pH 7.4, 150mM NaCl, 0.02% sodium azide and 50% glycerol.

Immunogen: The antiserum was produced against synthesized peptide derived from internal of human TSC22D1.

Purification: The antibody was affinity-purified from

rabbit antiserum by affinity-chromatography using epitope-specific immunogen.

Specificity: TSC22D1 antibody detects endogenous levels of total TSC22D1 protein.

Reactivity: Human, Mouse, Rat

Applications: WB: 1:500~1:1000 IHC: 1:50~1:100

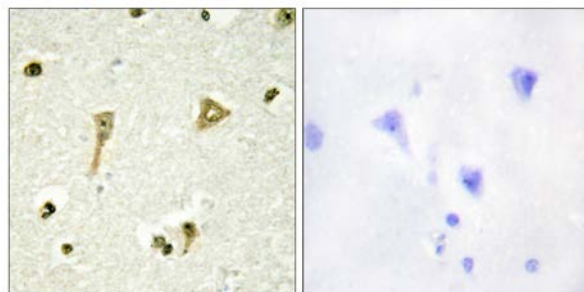
IF: 1:100~1:500 ELISA: 1:20000

References:

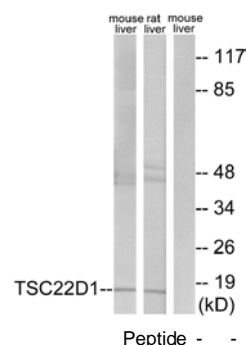
Jay P., Biochem. Biophys. Res. Commun. 222:821-826(1996).

Ohta S., Eur. J. Biochem. 242:460-466(1996).

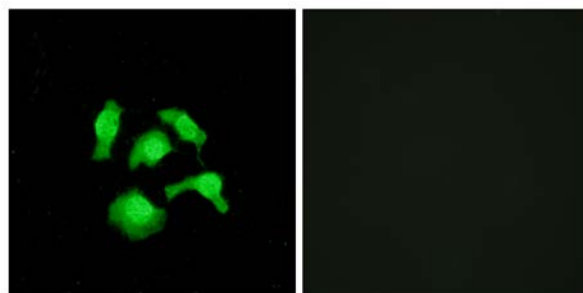
Dmitrenko V.V., Cyt. Genet. (Russ.) 30:41-47(1996).



Immunohistochemistry analysis of paraffin-embedded human brain tissue using TSC22D1 antibody.



Western blot analysis of extracts from mouse liver cells and rat liver cells, using TSC22D1 antibody.



Peptide -

+

For Research Use Only

Immunofluorescence analysis of HepG2 cells, using
TSC22D1 antibody.