



## VPS72 Antibody

E11-11112C

**Catalog Number:** E11-11112 C

**Concentration:** 1mg/ml

**Swiss-Prot No.:** Q15906

**Other Names:** Vacuolar protein sorting-associated protein 72 homolog, Transcription factor-like 1, Protein YL-1, VPS72, TCFL1, YL1

**Storage/Stability:** Store at -20°C/1 year

**Form of Antibody:** Rabbit IgG in phosphate buffered saline (without  $Mg^{2+}$  and  $Ca^{2+}$ ), pH 7.4, 150mM NaCl, 0.02% sodium azide and 50% glycerol.

**Immunogen:** The antiserum was produced against synthesized peptide derived from internal of human VPS72.

**Purification:** The antibody was affinity-purified from rabbit antiserum by affinity-chromatography using epitope-specific immunogen.

**Specificity:** VPS72 antibody detects endogenous levels of total VPS72 protein.

**Reactivity:** Human, Mouse

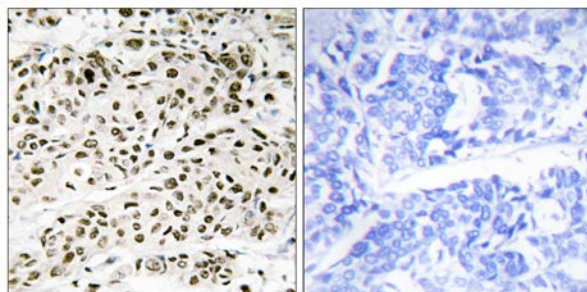
**Applications:** WB: 1:500~1:1000 IHC: 1:50~1:100  
ELISA: 1:40000

**References:**

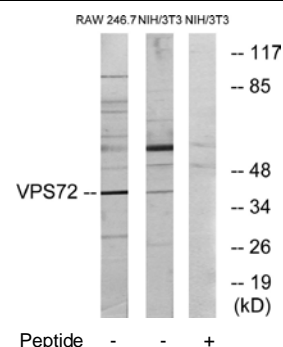
Horikawa I., Biochem. Biophys. Res. Commun. 208:999-1007(1995).

Gregory S.G., Nature 441:315-321(2006).

Cai Y., J. Biol. Chem. 280:13665-13670(2005).



Immunohistochemistry analysis of paraffin-embedded human breast carcinoma tissue using VPS72 antibody.



Western blot analysis of extracts from RAW264.7 cells and NIH/3T3 cells, using VPS72 antibody.

**For Research Use Only**