



DUSP6 Antibody

E11-11142C

Catalog Number: E11-11142 C

Concentration: 1mg/ml

Swiss-Prot No.: Q16828

Other Names: dual specificity protein phosphatase 6; dual specificity protein phosphatase PYST1; DUS6; DUSP6; EC 3.1.3.16; EC 3.1.3.48; MAP kinase phosphatase 3; mitogen-activated protein kinase phosphatase 3; MKP-3; MKP3; PYST1

Storage/Stability: Store at -20°C/1 year

Form of Antibody: Rabbit IgG in phosphate buffered saline (without Mg²⁺ and Ca²⁺), pH 7.4, 150mM NaCl, 0.02% sodium azide and 50% glycerol.

Immunogen: The antiserum was produced against synthesized peptide derived from internal of human DUSP6.

Purification: The antibody was affinity-purified from rabbit antiserum by affinity-chromatography using epitope-specific immunogen.

Specificity: DUSP6 antibody detects endogenous levels of total DUSP6 protein.

Reactivity: Human (Identities = 100%, Positives = 100%);
Mouse (Identities = 92%, Positives = 92%);
Rat (Identities = 92%, Positives = 92%)

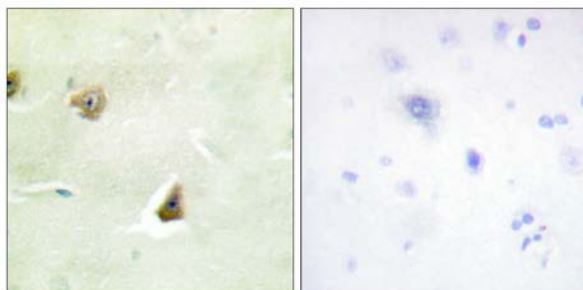
Applications: IHC: 1:50~1:100 IF: 1:100~1:500
ELISA: 1:20000 WB: 1:500~1:1000

References:

Groom L.A., EMBO J. 15:3621-3632(1996).

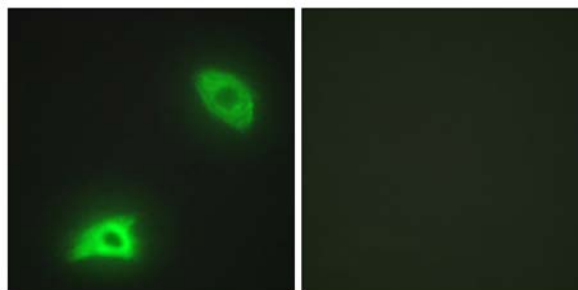
Furukawa T., Cytogenet. Cell Genet. 82:156-159(1998).

Stewart A.E., Nat. Struct. Biol. 6:174-181(1999).



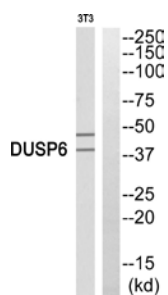
Peptide - +

Immunohistochemistry analysis of paraffin-embedded human brain tissue, using DUSP6 antibody.



Peptide - +

Immunofluorescence analysis of HeLa cells, using DUSP6 antibody.



Western blot analysis of 3T3 cells using DUSP6 antibody.

For Research Use Only